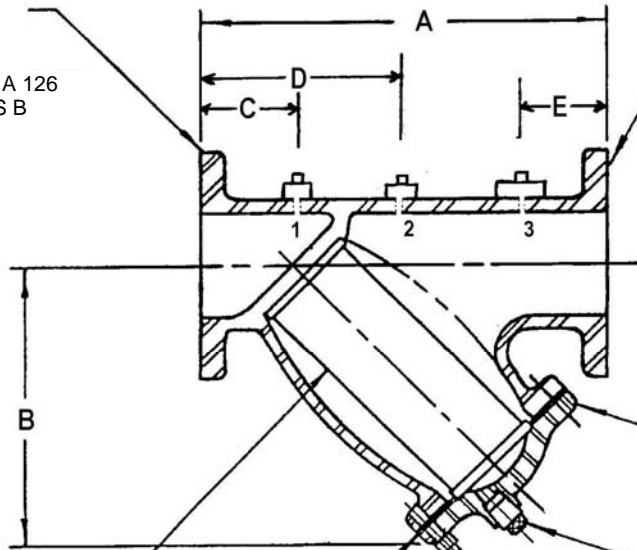


**BODY**  
CAST  
IRON  
ASTM A 126  
CLASS B



**FLANGES**  
ASA 250#  
DRILLING

**STYLE TF2  
Y-TYPE 250#  
FLANGED STRAINER**

**COVER**  
CAST IRON  
ASTM A 126  
CLASS B

**SCREEN**  
STAINLESS  
STEEL

**GASKET**  
FIBER

**BOLT ASSY.**  
STEEL  
ASTM A 284

**BLOWOFF**

**OPERATING TEMPERATURE & PRESSURE:**

Steam ..... 250 psi at 400° F  
Water, Oil, Gas ..... 400 psi at 150° F

**STANDARD SCREENS:**

Service	Sizes	Screen Openings	Screen Material
Steam	2" thru 6"	.045 perf.	Stainless Steel
	8" thru 16"	.062 perf.	
Liquid	2" thru 3"	.045 perf.	Stainless Steel
	4" thru 16"	.125 perf.	

Qty	Sizes	A	B	C	D	E	Ports			Size of Blowoff	Ship Weight (lbs)
							1	2	3		
	2"	9-7/8"	6-3/16"	2-1/2"	5"	2-1/2"	1/4"	1/4"	3/4"	1/2"	33
	2-1/2	11-1/4	7-5/8	3	5	3	1/4	1/4	3/4	1	49
	3	12-1/2	8-1/4	3	6	3	1/4	1/4	3/4	1	57
	4	14-7/8	10-1/16	3	7	3	1/4	1/4	3/4	1-1/4	108
	5	17-15/16	12-1/2	3-1/2	9	3-1/2	1/4	1/4	3/4	1-1/4	157
	6	20-3/8	14-5/16	4	10	4	1/4	1/4	3/4	1-1/2	215
	8	24	17-3/8	4	12	4	1/4	1/4	3/4	1-1/2	316
	10	29-1/2	20-7/8	5	15	5	1/4	1/4	3/4	2	525
	12	33-3/4	23-9/16	5	17	5	1/4	1/4	3/4	2	704
	14	37-1/4	27-13/16	6	19	6	1/4	1/4	3/4	2	906
	16	42-3/8	29-1/2	6	19	6	1/4	1/4	3/4	2-1/2	1336

CUSTOMER \_\_\_\_\_

PROJECT \_\_\_\_\_

ENGINEER \_\_\_\_\_

ARCHITECT \_\_\_\_\_

PRO. OR P.O. NO. \_\_\_\_\_



DESCRIPTION:

**250# FLANGED STRAINER  
STYLE TF2**

DRAWING BY: <b>ZB</b>	DATE: <b>9/2/09</b>	DRAWING NO. <b>TF2-Rev2</b>
--------------------------	------------------------	--------------------------------