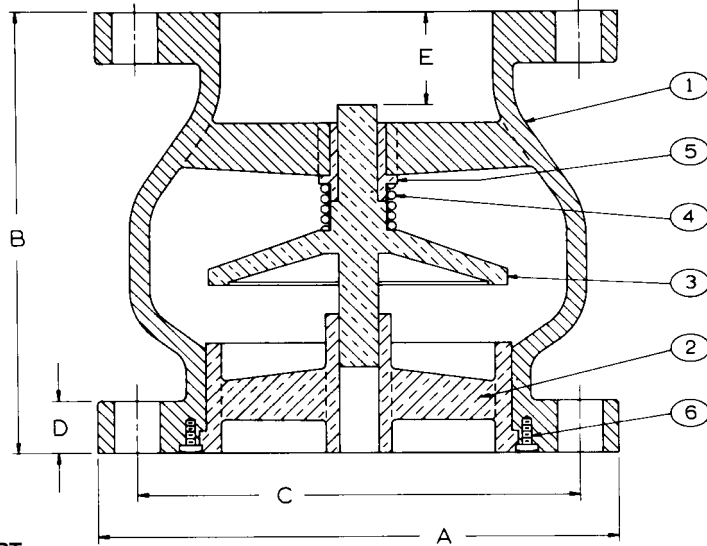


NOTE: THESE VALVES MATE TO WAFER-STYLE BUTTERFLY VALVES WITHOUT THE USE OF SPOOL PIECES OR OTHER ADAPTERS.



## STYLE 900 GLOBE STYLE SILENT CHECK VALVE 2.5" through 10"

**NOTE:**

Valve is designed for liquid service only. Install 5 to 10 pipe diameters downstream from pump discharge or elbows to a void flow turbulence. Valve is designed to be mated to standard steel flanges.

PART NO. / NAME	MATERIAL / ASTM NO.
1 BODY	Cast Iron ASTM A48
2 SEAT	Bronze ASTM B584
3 PLUG	Bronze ASTM B584
4 SPRING	Stainless Steel T304
5 BUSHING	Bronze ASTM B584
6 SCREWS	Stainless Steel T304

MAX. NON-SHOCK WORKING PSI 125# ANSI B16.1 FLANGE RATING		
TEMPERATURE		
SIZE	150°F.	200°F.
2-1/2"-10"	200 PSI	190 PSI

MAX. NON-SHOCK WORKING PSI 250# ANSI B16.1 FLANGE RATING		
TEMPERATURE		
SIZE	150°F.	200°F.
2-1/2"-10"	400 PSI	370 PSI

OTHER MATERIALS AND RESILIENT SEATS ARE AVAILABLE - CONTACT FACTORY

2-1/2" VALVE - TRIM IS THREADED INTO BODY

### ANSI CLASS 125

QTY.	Valve Size	Model Number	A	B	C	D	E	Cv*	BOLT SIZE	NO. OF BOLTS
	2-1/2"	902.5	7"	5-1/2"	5-1/2"	11/16"	1-3/16"	110	5/8"	4
	3	903	7-1/2"	6	6	15/16"	1-3/8"	155	5/8"	4
	4	904	9"	7-1/4"	7-1/2"	15/16"	1-3/4"	278	5/8"	8
	5	905	10"	8-1/2"	8-1/2"	15/16"	2"	435	3/4"	8
	6	906	11"	9-3/4"	9-1/2"	1"	2-1/2"	625	3/4"	8
	8	908	13-1/2"	12-1/2"	11-3/4"	1-1/8"	3-1/4"	1115	3/4"	8
	10	910	16"	15-1/2"	14-1/4"	1-3/16"	4-1/4"	1770	7/8"	12

### ANSI CLASS 250

QTY.	Valve Size	Model Number	A	B	C	D	E	Cv*	BOLT SIZE	NO. OF BOLTS
	2-1/2"	952.5	7-1/2"	5-1/2"	5-7/8"	1"	1-7/16"	110	3/4"	8
	3	953	8-1/4"	6	6-5/8"	1-1/8"	1-3/8"	155	3/4"	8
	4	954	10"	7-1/4"	7-7/8"	1-1/4"	1-3/4"	278	3/4"	8
	5	955	11"	8-1/2"	9-1/4"	1-3/8"	2"	435	3/4"	8
	6	956	12-1/2"	9-3/4"	10-5/8"	1-7/16"	2-1/2"	625	3/4"	12
	8	958	15"	12-1/2"	13"	1-5/8"	3-1/4"	1115	7/8"	12
	10	960	17-1/2"	15-1/2"	15-1/4"	1-7/8"	4-1/4"	1770	1"	16

\*Flow coefficient is the number of U.S. gallons/minute of 60°F water that will flow through a valve with 1 PSI of pressure drop across the valve.

CUSTOMER \_\_\_\_\_  
 PROJECT \_\_\_\_\_  
 ENGINEER \_\_\_\_\_  
 ARCHITECT \_\_\_\_\_  
 PRO. OR P.O. NO \_\_\_\_\_



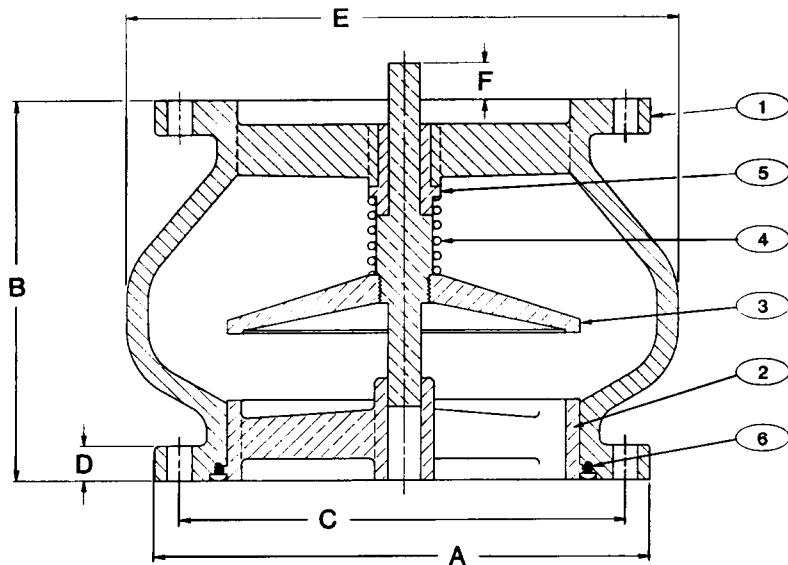
DESCRIPTION:

**2-1/2" - 10" 125# AND 250# GLOBE STYLE  
SILENT CHECK VALVE**

DRAWN BY:  
**ZB**

DATE:  
**REV 2/20/09**

DRAWING NO:  
**900-2.5 REV1**



**STYLE 900  
GLOBE STYLE  
SILENT CHECK VALVE  
12" through 42"**

**NOTE:**

Valve is designed for liquid service only. Install 5 to 10 pipe diameters downstream from pump discharge or elbows to a void flow turbulence. Valve is designed to be mated to standard steel flanges.

PART NO. / NAME	MATERIAL / ASTM NO.
1 BODY	Cast Iron ASTM A48
2 SEAT	Bronze ASTM B584
3 PLUG	Bronze ASTM B584
4 SPRING	Stainless Steel T304
5 BUSHING	Bronze ASTM B584
6 SCREWS	Stainless Steel T304

OTHER MATERIALS AND RESILIENT SEATS ARE AVAILABLE - CONTACT FACTORY

MAX. NON-SHOCK WORKING PSI 125# ANSI B16.1 FLANGE RATING		
TEMPERATURE		
SIZE	150°F.	200°F.
12"	200 PSI	190 PSI
14"-42"	150 PSI	135 PSI

MAX. NON-SHOCK WORKING PSI 250# ANSI B16.1 FLANGE RATING		
TEMPERATURE		
SIZE	150°F.	200°F.
12"	400 PSI	370 PSI
14"-42"	300 PSI	280 PSI

**ANSI CLASS 125**

QTY.	Valve Size	Model Number	A	B	C	D	E	F	Cv*	BOLT SIZE	NO. OF BOLTS
	12"	912	19"	14-1/4"	17"	1-1/4"	20"	3/4"	2500	7/8"	12
	14	914	21	15-3/4"	18-3/4"	1-3/8"	22"	1-7/16"	3400	1"	12
	16	916	23-1/2"	17-5/8"	21-1/4"	1-7/16"	25"	2-1/4"	4400	1"	16
	18	918	25"	18-3/4"	22-3/4"	1-9/16"	28"	2-1/4"	5600	1-1/8"	16
	20	920	27-1/2"	20-5/8"	25"	1-11/16"	31"	2-15/16"	6900	1-1/8"	20
	24	924	32"	24"	29-1/2"	1-7/8"	37"	3-5/8"	10000	1-1/4"	20
	30	930	38-3/4"	29-1/4"	36"	2-1/8"	45"	5"	15400	1-1/4"	28
	36	936	46"	45"	42-3/4"	2-3/8"	54"	8"	22400	1-1/2"	32
	42	942	53"	50"	49-1/2"	2-5/8"	64"	9-1/4"	30400	1-1/2"	36

**ANSI CLASS 250**

QTY.	Valve Size	Model Number	A	B	C	D	E	F	Cv*	BOLT SIZE	NO. OF BOLTS
	12"	962	20-1/2"	14-1/4"	17-3/4"	2"	20"	3/4"	2500	1-1/8"	16
	14	964	23	15-3/4"	20-1/4"	2-1/8"	22"	1-7/16"	3400	1-1/8"	20
	16	966	25-1/2"	17-5/8"	22-1/2"	2-1/4"	25"	2-1/4"	4400	1-1/4"	20
	18	968	28"	18-3/4"	24-3/4"	2-3/8"	28"	2-1/4"	5600	1-1/4"	24
	20	970	30-1/2"	20-5/8"	27"	2-1/2"	31"	2-15/16"	6900	1-1/4"	24
	24	974	36"	24"	32"	2-3/4"	37"	3-5/8"	10000	1-1/2"	24
	30	980	43"	29-1/4"	39-1/4"	3"	45"	5"	15400	1-3/4"	28
	36	986	50"	45"	46"	3-3/8"	54"	8"	22400	2"	32
	42	992	57"	50"	52-3/4"	3-11/16"	64"	9-1/4"	30400	2"	36

\*Flow coefficient is the number of U.S. gallons/minute of 60°F water that will flow through a valve with 1 PSI of pressure drop across the valve.

CUSTOMER \_\_\_\_\_  
 PROJECT \_\_\_\_\_  
 ENGINEER \_\_\_\_\_  
 ARCHITECT \_\_\_\_\_  
 PRO. OR P.O. NO \_\_\_\_\_



DESCRIPTION:  
**12" - 42" 125# AND 250# GLOBE STYLE  
 SILENT CHECK VALVE**

DRAWN BY: <b>ZB</b>	DATE: <b>REV 2/20/09</b>	DRAWING NO: <b>900-12 REV1</b>
------------------------	-----------------------------	-----------------------------------