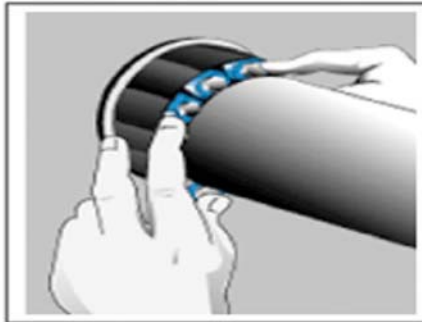
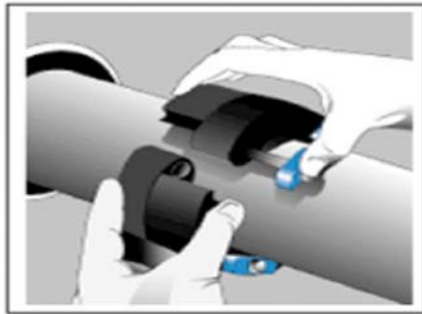
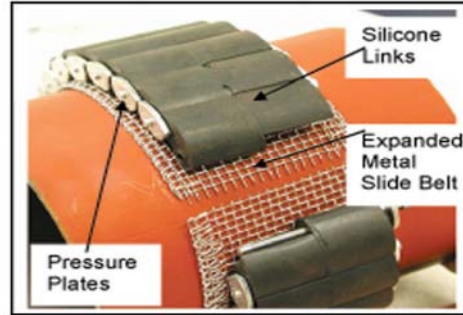


# Sliding MetraSeal™ HT (Silicone) OPERATION, INSTALLATION AND MAINTENANCE INSTRUCTIONS

## OPERATION:

The MetraSeal™ HT can be installed in concrete walls, floors, or ceilings. Service conditions include steam piping, high temp. water (400 deg. F), this unique design permits unlimited axial pipe movement. The surface of the pipe over the length of the area that will slide through the seal must be in an "as supplied from the factory" condition. Remove any weld splatter, or protrusions. Pipe insulation may be butted directly up to the installed seal assembly.



## INSTALLATION:

1. Center the metallic pipe, copper tube, and or conduit in the penetration hole. Wrap the wire mesh slide belt around the pipe. The wire mesh slide belt ends should butt up against each other without overlapping.
2. Confirm that the curve of the rubber links and if curved, the curve of the metal pressure plates are in the same direction as the curve of the pipe.
3. Center and wrap the MetraSeal™ HT links over the wire mesh slide belt and the pipe. The slide belt is slightly wider than the MetraSeal™ HT and both hems of the slide belt should be visible outside the MetraSeal™ HT.
4. Connect the two ends of the rubber links. The wire mesh slide belt should extend 3/8" to 1/2" outside the rubber link of the MetraSeal™ HT.
5. Slide the entire assembly into the space between the pipe and the hole.
  - a. For floor/ceiling applications, the MetraSeal™ HT assembly must be recessed 1/2" on the ceiling side.
  - b. For wall applications, Center the MetraSeal™ HT assembly in the hole for wall application.
6. Gradually and sequentially tighten the bolts in a clockwise or counterclockwise direction. (Do not cross tighten the MetraSeal™ HT.) Tighten each bolt 2 to 3 turns; making at least 5 to 9 passes completely around the pipe, until the seal is firmly in place. This will ensure uniform expansion of each rubber link.

**MAINTENANCE:** None Required

Copyright The Metraflex Co.® June 2 2002

CUSTOMER \_\_\_\_\_

PROJECT \_\_\_\_\_

ENGINEER \_\_\_\_\_

ARCHITECT \_\_\_\_\_

PRO. OR P.O. NO. \_\_\_\_\_

**Metraflex.**  
*for pipes in motion*

DESCRIPTION:

**Sliding MetraSeal HT (Silicone)**

Operation, Installation & Maintenance Instructions

DRAWING BY:  
JT

DATE:  
08-09-06

DRAWING NO.  
SEAL SLIDE HT-OIM

