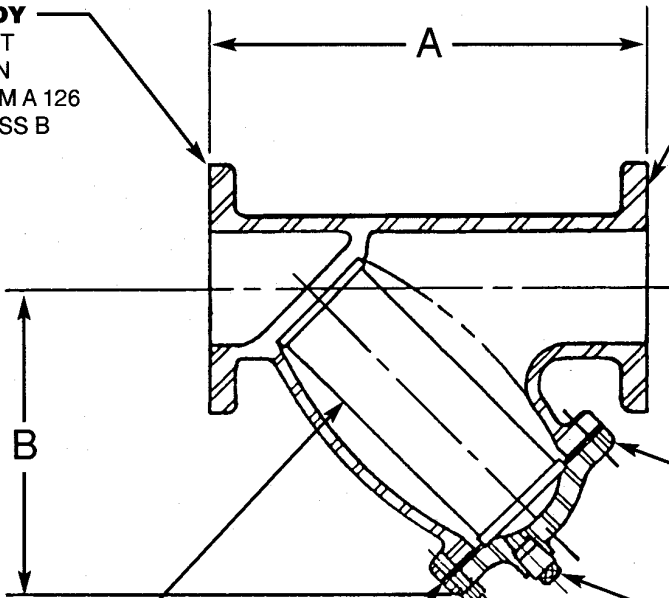


BODY
CAST
IRON
ASTM A 126
CLASS B

FLANGES
ASA 125#
DRILLING

**STYLE M1K
Y-TYPE 125#
FLANGED STRAINER**



COVER
CAST IRON
ASTM A 126
CLASS B

SCREEN
STAINLESS
STEEL
ASTM A 167
TYPE 304

GASKET
FIBER

BOLT ASSY.
STEEL
ASTM A 307-B

BLOWOFF PLUG
(NOT INCLUDED)

STANDARD SCREENS

Service	Sizes	Screen Openings	Screen Material
Steam	2" thru 10"	.045 perf.	Stainless Steel
	12" 14" thru 18"	.062 perf. .125 perf.	
Liquid	2" thru 4"	.062 perf.	Stainless Steel
	5" thru 18"	.125 perf.	

OPERATING TEMPERATURE & PRESSURE:

2-12" Steam125 psi at 450° F
 2-12" Water, Oil, Gas200 psi at 150° F
 14-18" Steam100 psi at 353° F
 14-18" Water, Oil, Gas150 psi at 150° F

Quantity	Size		A	B	Blowoff Size Of	Ship Weight (Lbs.)	Notes
	Inch	MM					
	2"	50	8-3/8"	8-3/8"	1-1/4"	30	
	2-1/2"	65	9-7/8"	8-3/8"	1-1/4"	35	
	3"	80	10-1/4"	7-3/8"	1"	35	
	4"	100	12-1/8"	8-3/4"	1-1/2"	61	
	5"	125	15-5/8"	12"	2"	102	
	6"	150	18-9/16"	14"	2"	155	
	8"	200	24-1/8"	17-3/4"	2"	239	
	10"	250	29-9/16"	21-1/4"	2"	394	
	12"	300	33-3/4"	24"	2"	562	
	14"	350	37-1/8"	25-1/2"	2"	821	
	16"	400	42-3/8"	29-1/8"	2"	1050	
	18"	450	46"	35-1/4"	2"	1850	

ALL DIMENSIONS IN INCHES

CUSTOMER _____
 PROJECT _____
 ENGINEER _____
 ARCHITECT _____
 PRO. OR P.O. NO _____

the Metraflex® company
 CHICAGO ILLINOIS

DESCRIPTION:
**STYLE M-1-K
 125# FLANGED STRAINER**

DRAWN BY: **JO** DATE: **11-98** DRAWING NO: **M1K-98**