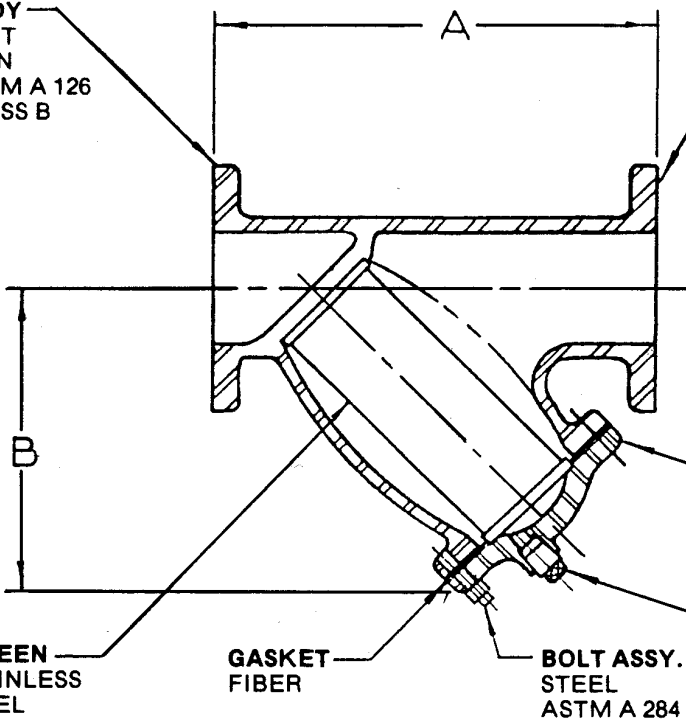


BODY  
CAST  
IRON  
ASTM A 126  
CLASS B

FLANGES  
ANSI 250#  
DRILLING

**STYLE M2K  
Y-TYPE 250#  
FLANGED STRAINER**



SCREEN  
STAINLESS  
STEEL  
ASTM A 167  
TYPE 304

GASKET  
FIBER

BOLT ASSY.  
STEEL  
ASTM A 284

COVER  
CAST IRON  
ASTM A 126  
CLASS B

BLOWOFF  
(PLUG NOT INCLUDED)

**STANDARD SCREENS:**

Service	Sizes	Screen Openings	Screen Material
Steam	2" thru 10" 12"	.045 perf. .062 perf.	Stainless Steel
Liquid	2" thru 4" 5" thru 12"	.062 perf. .125 perf.	Stainless Steel

**OPERATING TEMPERATURE & PRESSURE:**

Steam .....250 psi at 450° F  
Water, Oil, Gas .....500 psi at 100° F

Quantity	Sizes	A	B	Blowoff Size Of	Ship Weight (Lbs.)	Notes
	2"	9-5/16"	6"	1/2"	26	
	2-1/2	11-1/16	7-1/8	1	40	
	3	12-5/8	9-1/8	1-1/4	59	
	4	15-5/8	10-7/8	1-1/2	93	
	5	18-1/4	12-15/16	2	146	
	6	20-3/16	14-1/2	2	194	
	8	25-1/8	16-7/16	2	316	
	10	29-1/8	19-1/4	2	475	
	12	33-3/4	22-7/8	2	750	

ALL DIMENSIONS IN INCHES

CUSTOMER \_\_\_\_\_  
PROJECT \_\_\_\_\_  
ENGINEER \_\_\_\_\_  
ARCHITECT \_\_\_\_\_  
PRO OR P.O. NO \_\_\_\_\_

*the Metraflex company*  
CHICAGO ILLINOIS

DESCRIPTION:  
**250# FLANGED STRAINER**  
STYLE M2K

DRAWN BY : W4	DATE: 5/00	DRAWING NO:
------------------	---------------	-------------