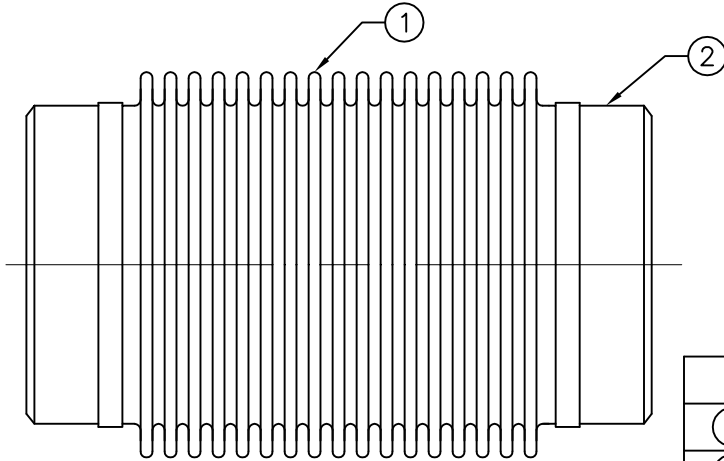


EX40 EXHAUST PIPE EXPANSION JOINT, 150 LB. SCH. 40 WELD ENDS

MAX. OPERATING 5 PSI, 1000°F



MATERIALS		
①	BELLOWS	STAINLESS STEEL
②	WELD END	CARBON STEEL*

* STAINLESS STEEL ENDS AVAILABLE, MAX OPERATING TEMP. IS 1200°F.

QTY	PIPE SIZE	ID (in)	OAL (in)	AXIAL COMP. (in)	LATERAL OFFSET (in)	AXIAL SPRING RATE (lb/in)	LATERAL SPRING RATE (lb/in)	WEIGHT (lb)
	4	4.50	12.00	3	1	69	22	7
	5	5.56	12.00	3	1	105	51	8
	6	6.63	12.00	3	1	122	80	11
	8	8.63	12.00	3	1	154	165	14
	10	10.75	12.00	3	1	83	142	19
	12	12.75	12.00	3	1	97	226	24
	14	14.00	12.00	3	1	75	213	27
	16	16.00	12.00	3	1	84	306	34
	18	18.00	12.00	3	1	93	423	41
	20	20.00	12.00	3	1	102	568	47
	22	22.00	12.00	3	1	112	742	53
	24	24.00	12.00	3	1	121	947	62

2	09/14/2011	ADDED STAINLESS NOTE TO MATERIALS TABLE
1	06/03/2011	REV. SPRING RATES, WEIGHTS ADDED
REV.	DATE	DESCRIPTION

Metraflex
for pipes in motion

2323 W. HUBBARD ST.
CHICAGO, IL 60612
TEL: 312-738-3800
FAX: 312-738-0415
WWW.METRAFLEX.COM

DESCRIPTION:
EXHAUST BELLOWS, WELD ENDS

DRAWN BY: MIR DATE: 09/14/2011

APPROVED: ZB DATE: 09/14/2011

SCALE: NONE DRAWING NUMBER: EX40

CUSTOMER: _____

PROJECT: _____

ENGINEER: _____