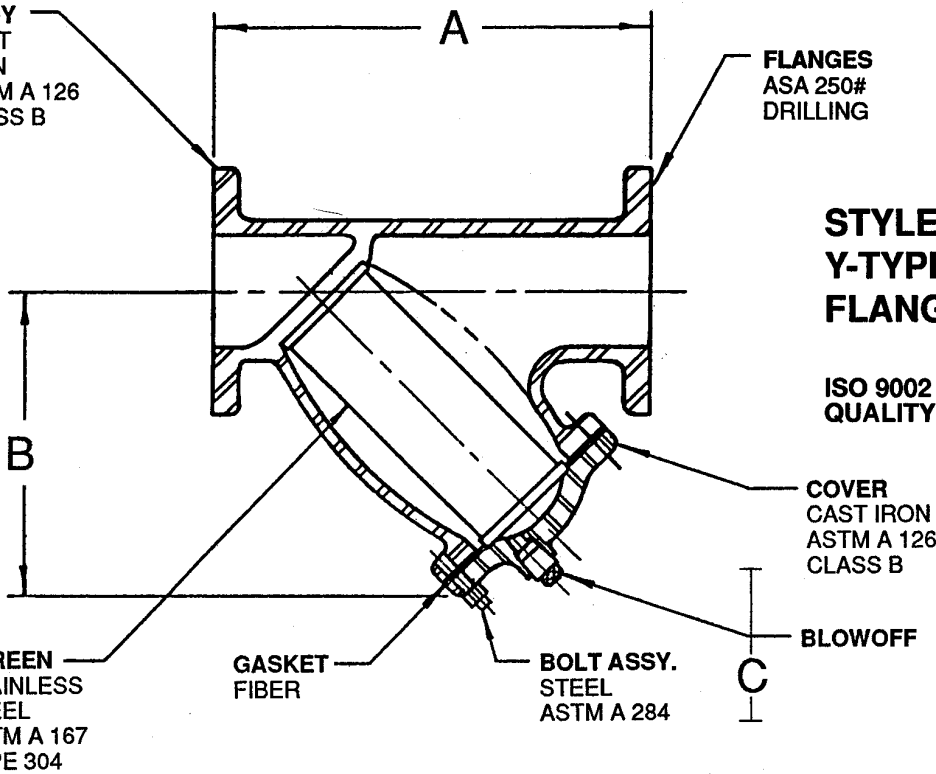


BODY
CAST
IRON
ASTM A 126
CLASS B

FLANGES
ASA 250#
DRILLING

**STYLE TF2
Y-TYPE 250#
FLANGED STRAINER**

ISO 9002
QUALITY ASSURANCE



OPERATING TEMPERATURE & PRESSURE:

Steam250 psi at 400° F
Water, Oil, Gas400 psi at 150° F

STANDARD SCREENS:

Service	Sizes	Screen Openings	Screen Material
Steam	2" thru 6"	.045 perf.	Stainless Steel
	8" thru 12"	.062 perf.	
Liquid	2" thru 3"	.045 perf.	Stainless Steel
	4" thru 12"	.125 perf.	

Quantity	Sizes	A	B	C Removal Clearance	Size Of Blowoff	Ship Weight (lbs.)	Notes
	2"	9-7/8"	6-3/16"	11"	1/2"	33	
	2-1/2	11-1/4	7-5/8	13	1	49	
	3	12-1/2	8-1/4	15	1	57	
	4	14-7/8	10-1/16	19	1-1/4	108	
	5	17-15/16	12-1/2	21	1-1/4	157	
	6	20-3/8	14-5/16	24	1-1/2	215	
	8	24	17-3/8	25	1-1/2	316	
	10	29-1/2	20-7/8	30	2	525	
	12	33-3/4	23-9/16	35	2	704	

CUSTOMER _____
PROJECT _____
ENGINEER _____
ARCHITECT _____
PRO OR P.O. NO _____

the Metraflex company
CHICAGO ILLINOIS

DESCRIPTION:
**250# FLANGED STRAINER
STYLE TF2**

DRAWN BY : JR	DATE: 2-10-90	DRAWING NO: TF2-A
------------------	------------------	----------------------