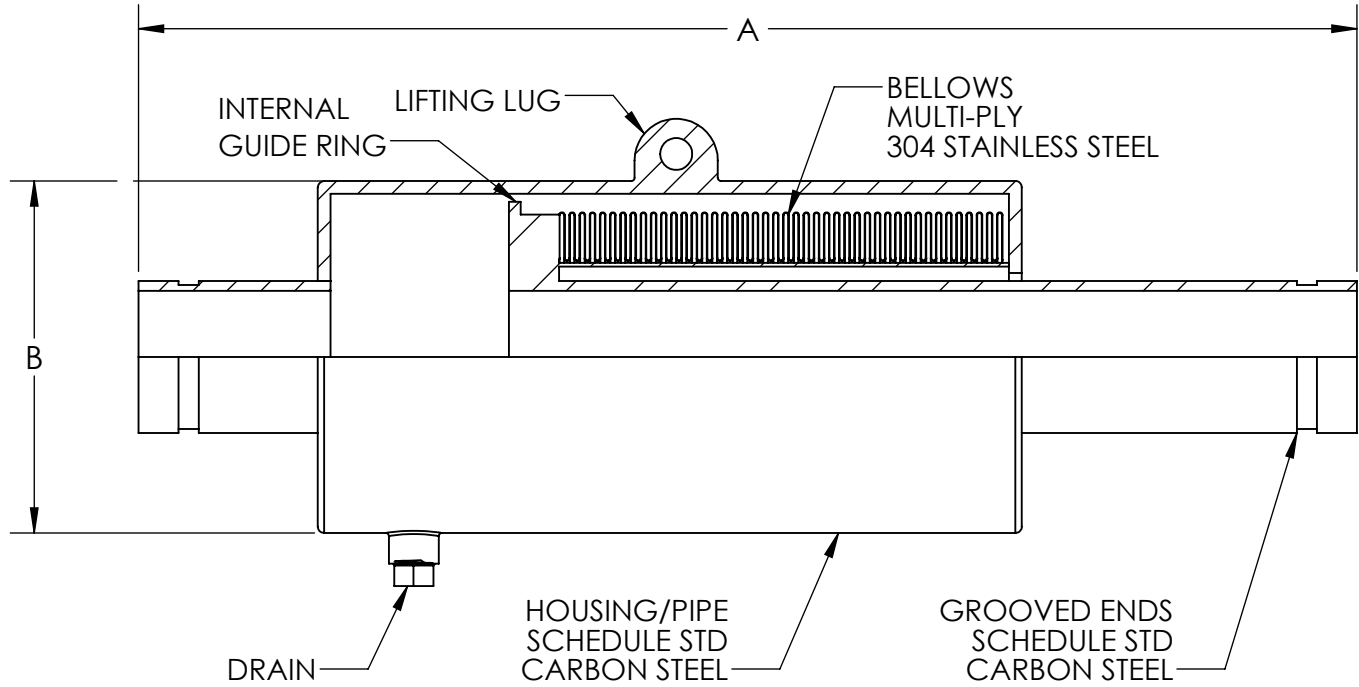


METRAFLEX METRAGATOR
150 PSI, 4" AXIAL COMPRESSION, GROOVED ENDS
EXTERNALLY PRESSURIZED EXPANSION JOINT



THE EXPANSION JOINT IS DESIGNED FOR AXIAL MOVEMENT ONLY. PIPE MUST BE PROPERLY GUIDED AND ANCHORED PER THE RECOMMENDATIONS OF THE EXPANSION JOINT MANUFACTURERS ASSOCIATION.

QTY	PART NUMBER	PIPE SIZE		A (in)	B (in)	EFF. AREA (in ²)	SPRING RATE (lb/in)	NOTES
		NPS	MM					
	GAT04SG0200	2	50	24.25	5.5	13.2	183.0	
	GAT04SG0250	2.5	65	24.5	5.5	13.2	183.0	
	GAT04SG0300	3	80	23.25	6.5	20.8	343.0	
	GAT04SG0400	4	100	24.25	8.5	36.0	200.0	
	GAT04SG0500	5	130	24.25	10.75	46.4	235.0	
	GAT04SG0600	6	150	24.75	12.75	58.9	269.0	
	GAT04SG0800	8	200	27.25	14	88.8	332.0	
	GAT04SG1000	10	250	26	16	124.6	400.0	
	GAT04SG1200	12	300	26	18	166.6	463.0	

DESIGN DATA

MAXIMUM OPERATING TEMPERATURE: 500°F (260°C)*
 PRESSURE: 150 PSI (1034 KPa)
 TEST PRESSURE: 225 PSI (1551 KPa)
 AXIAL MOVEMENT: 4" COMPRESSION (100 mm)

*TEMPERATURE RATING IS FOR THE METRAGATOR ONLY. TEMPERATURE RATING AT THE GROOVED CONNECTIONS IS DETERMINED BY THE GASKET USED.

MILITARY SPECS:
 CONFORMS TO MIL-E-17813H AND ASTM-F-2934

CUSTOMER: _____

PROJECT: _____

ENGINEER: _____

NOTE: ANCHOR LOAD =
 (MAX PSI X EFFECTIVE AREA) +
 (SPRING RATE X MOVEMENT)

ADDITIONAL NOTE:
 DRAIN NPT SIZE (SIZES 2" - 6") : 1/2"
 DRAIN NPT SIZE (SIZES 8" - 12") : 3/4"

2	ADDED DRAIN SIZE	03/18/2024
REV. 1	TEMPERATURE ADJUST	DATE 4/29/2021

Metraflex
for pipes in motion

2323 W. HUBBARD ST.
 CHICAGO, IL 60612
 TEL: 312-738-3800
 FAX: 312-738-0415
 WWW.METRAFLEX.COM

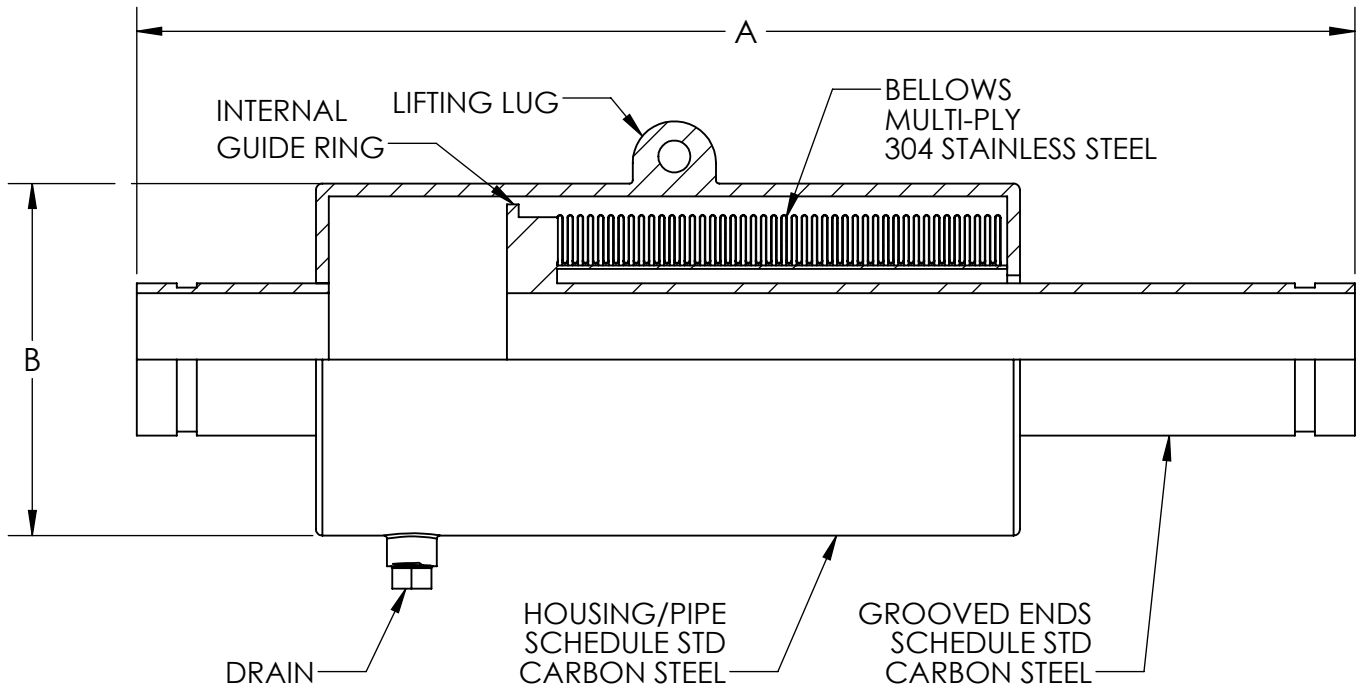
**METRAFLEX METRAGATOR, 150 PSI,
 4" AXIAL COMPRESSION, GROOVED ENDS**

DRAWN BY: DKISH DATE: 6/1/2015

APPROVED: ZB DATE: 6/2/2015

SCALE: N/A DRAWING NUMBER: GAT04SG-1

METRAFLEX METRAGATOR
150 PSI, 6" AXIAL COMPRESSION, GROOVED ENDS
EXTERNALLY PRESSURIZED EXPANSION JOINT



THE EXPANSION JOINT IS DESIGNED FOR AXIAL MOVEMENT ONLY. PIPE MUST BE PROPERLY GUIDED AND ANCHORED PER THE RECOMMENDATIONS OF THE EXPANSION JOINT MANUFACTURERS ASSOCIATION.

QTY	PART NUMBER	PIPE SIZE		A (in)	B (in)	EFF. AREA (in ²)	SPRING RATE (lb/in)	NOTES
		NPS	MM					
	GAT06SG0200	2	50	31	5.5	13.2	115.0	
	GAT06SG0250	2.5	65	31.25	5.5	13.2	115.0	
	GAT06SG0300	3	80	29.5	6.5	20.8	235.0	
	GAT06SG0400	4	100	30.75	8.5	36.0	143.0	
	GAT06SG0500	5	130	30.75	10.75	46.4	166.0	
	GAT06SG0600	6	150	31.5	12.75	58.9	189.0	
	GAT06SG0800	8	200	33.75	14	88.8	235.0	
	GAT06SG1000	10	250	33	16	124.6	280.0	
	GAT06SG1200	12	300	32.25	18	166.6	326.0	

DESIGN DATA

MAXIMUM OPERATING TEMPERATURE: 500°F (260°C)*
 PRESSURE: 150 PSI (1034 KPa)
 TEST PRESSURE: 225 PSI (1551 KPa)
 AXIAL MOVEMENT: 6" COMPRESSION (150 mm)

*TEMPERATURE RATING IS FOR THE METRAGATOR ONLY. TEMPERATURE RATING AT THE GROOVED CONNECTIONS IS DETERMINED BY THE GASKET USED.

MILITARY SPECS:
 CONFORMS TO MIL-E-17813H AND ASTM-F-2934

CUSTOMER: _____

PROJECT: _____

ENGINEER: _____

NOTE: ANCHOR LOAD =
 (MAX PSI X EFFECTIVE AREA) +
 (SPRING RATE X MOVEMENT)

ADDITIONAL NOTE:
 DRAIN NPT SIZE (SIZES 2" - 6") : 1/2"
 DRAIN NPT SIZE (SIZES 8" - 12") : 3/4"

2	ADDED DRAIN SIZE	03/18/2024
REV. 1	TEMPERATURE ADJUST	DATE 4/29/2021

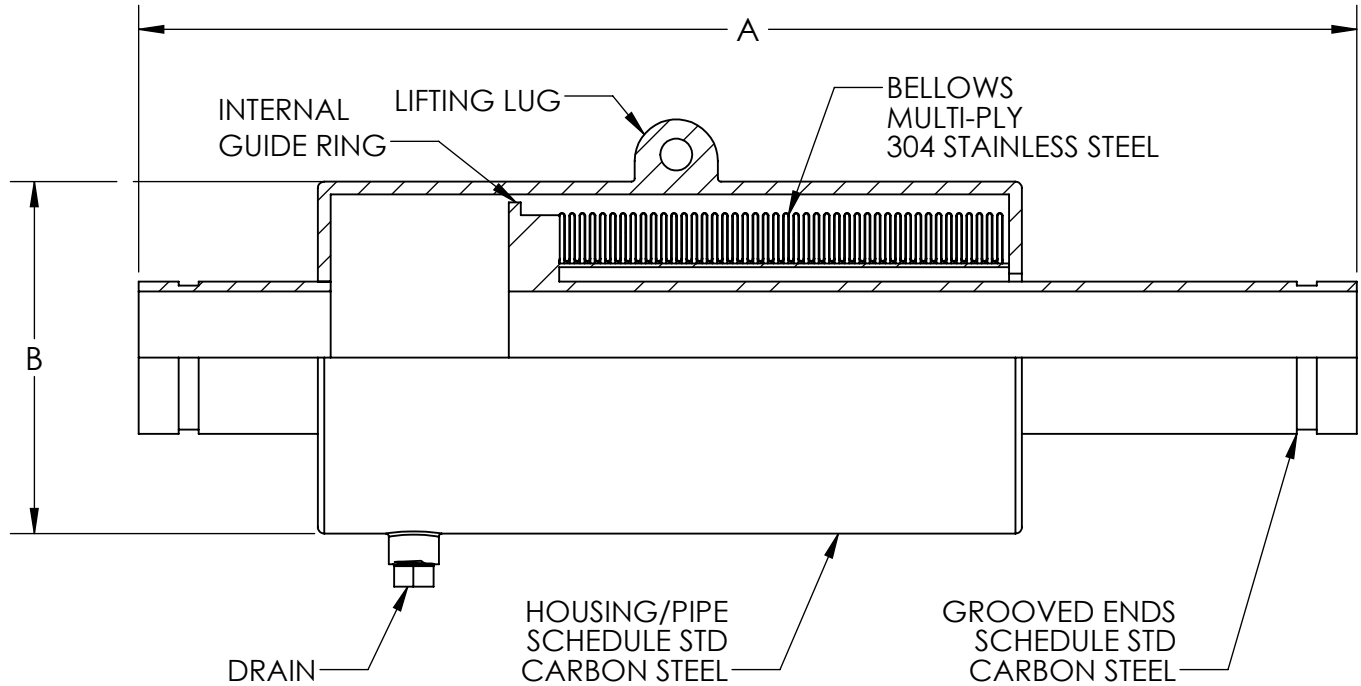
Metraflex
for pipes in motion

2323 W. HUBBARD ST.
 CHICAGO, IL 60612
 TEL: 312-738-3800
 FAX: 312-738-0415
 WWW.METRAFLEX.COM

**METRAFLEX METRAGATOR, 150 PSI,
 6" AXIAL COMPRESSION, GROOVED ENDS**

DRAWN BY: DKISH	DATE: 6/1/2015
APPROVED: ZB	DATE: 6/2/2015
SCALE: N/A	DRAWING NUMBER: GAT06SG-1

METRAFLEX METRAGATOR
150 PSI, 8" AXIAL COMPRESSION, GROOVED ENDS
EXTERNALLY PRESSURIZED EXPANSION JOINT



THE EXPANSION JOINT IS DESIGNED FOR AXIAL MOVEMENT ONLY. PIPE MUST BE PROPERLY GUIDED AND ANCHORED PER THE RECOMMENDATIONS OF THE EXPANSION JOINT MANUFACTURERS ASSOCIATION.

QTY	PART NUMBER	PIPE SIZE		A (in)	B (in)	EFF. AREA (in ²)	SPRING RATE (lb/in)	NOTES
		NPS	MM					
	GAT08SG0200	2	50	37.75	5.5	13.2	92.0	
	GAT08SG0250	2.5	65	38	5.5	13.2	92.0	
	GAT08SG0300	3	80	37.75	6.5	20.8	172.0	
	GAT08SG0400	4	100	37.25	8.5	36.0	103.0	
	GAT08SG0500	5	130	37.5	10.75	46.4	120.0	
	GAT08SG0600	6	150	37.75	12.75	58.9	138.0	
	GAT08SG0800	8	200	41	14	88.8	166.0	
	GAT08SG1000	10	250	39.25	16	124.6	200.0	
	GAT08SG1200	12	300	38.75	18	166.6	235.0	

DESIGN DATA

MAXIMUM OPERATING TEMPERATURE: 500°F (260°C)*
 PRESSURE: 150 PSI (1034 KPa)
 TEST PRESSURE: 225 PSI (1551 KPa)
 AXIAL MOVEMENT: 8" COMPRESSION (200 mm)

*TEMPERATURE RATING IS FOR THE METRAGATOR ONLY. TEMPERATURE RATING AT THE GROOVED CONNECTIONS IS DETERMINED BY THE GASKET USED.

MILITARY SPECS:
 CONFORMS TO MIL-E-17813H AND ASTM-F-2934

CUSTOMER: _____

PROJECT: _____

ENGINEER: _____

NOTE: ANCHOR LOAD =
 (MAX PSI X EFFECTIVE AREA) +
 (SPRING RATE X MOVEMENT)

ADDITIONAL NOTE:
 DRAIN NPT SIZE (SIZES 2" - 6") : 1/2"
 DRAIN NPT SIZE (SIZES 8" - 12") : 3/4"

2	ADDED DRAIN SIZE	03/18/2024
REV. 1	TEMPERATURE ADJUST	DATE 4/29/2021

Metraflex
for pipes in motion

2323 W. HUBBARD ST.
 CHICAGO, IL 60612
 TEL: 312-738-3800
 FAX: 312-738-0415
 WWW.METRAFLEX.COM

**METRAFLEX METRAGATOR, 150 PSI,
 8" AXIAL COMPRESSION, GROOVED ENDS**

DRAWN BY: DKISH	DATE: 6/1/2015
APPROVED: ZB	DATE: 6/2/2015
SCALE: N/A	DRAWING NUMBER: GAT08SG-1