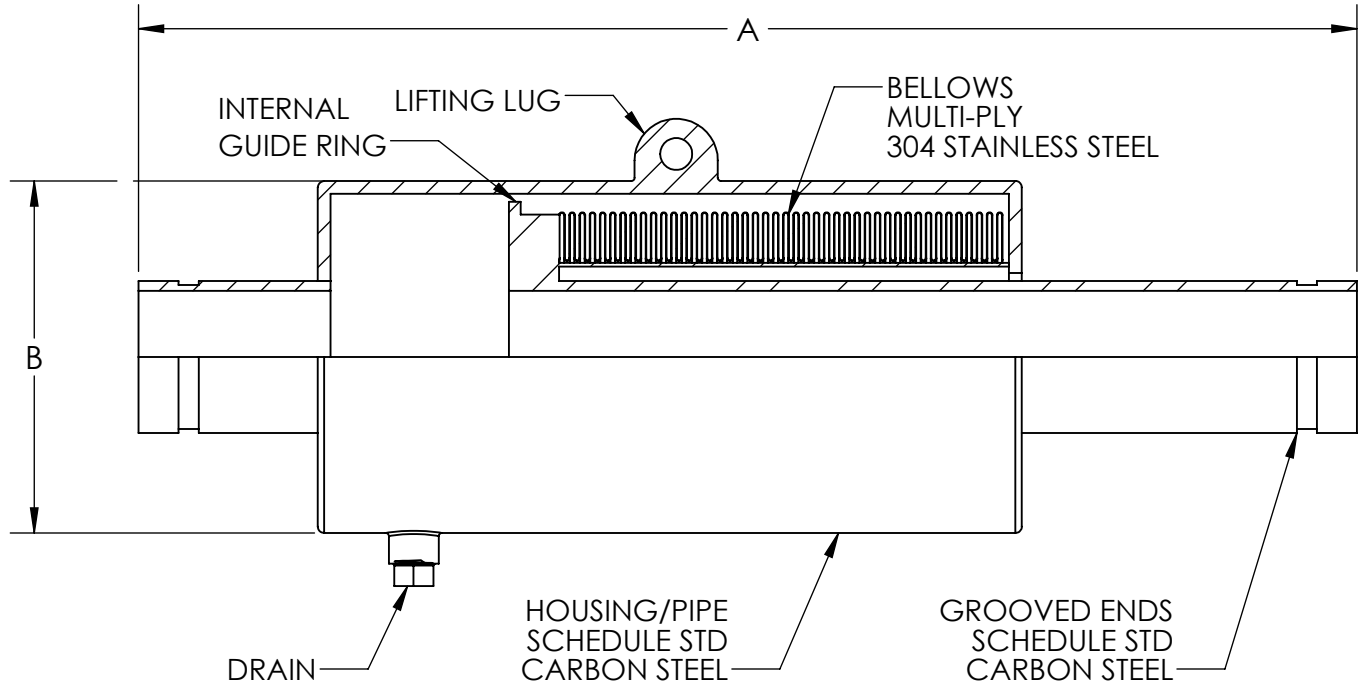


METRAFLEX METRAGATOR
150 PSI, 4" AXIAL COMPRESSION, GROOVED ENDS
EXTERNALLY PRESSURIZED EXPANSION JOINT



THE EXPANSION JOINT IS DESIGNED FOR AXIAL MOVEMENT ONLY. PIPE MUST BE PROPERLY GUIDED AND ANCHORED PER THE RECOMMENDATIONS OF THE EXPANSION JOINT MANUFACTURERS ASSOCIATION.

QTY	PART NUMBER	PIPE SIZE		A (in)	B (in)	EFF. AREA (in ²)	SPRING RATE (lb/in)	NOTES
		NPS	MM					
	GAT04SG0200	2	50	24.25	5.5	13.2	183.0	
	GAT04SG0250	2.5	65	24.5	5.5	13.2	183.0	
	GAT04SG0300	3	80	23.25	6.5	20.8	343.0	
	GAT04SG0400	4	100	24.25	8.5	36.0	200.0	
	GAT04SG0500	5	130	24.25	10.75	46.4	235.0	
	GAT04SG0600	6	150	24.75	12.75	58.9	269.0	
	GAT04SG0800	8	200	27.25	14	88.8	332.0	
	GAT04SG1000	10	250	26	16	124.6	400.0	
	GAT04SG1200	12	300	26	18	166.6	463.0	


DESIGN DATA
 MAXIMUM OPERATING TEMPERATURE: 500°F (260°C)*
 PRESSURE: 150 PSI (1034 KPa)
 TEST PRESSURE: 225 PSI (1551 KPa)
 AXIAL MOVEMENT: 4" COMPRESSION (100 mm)

*TEMPERATURE RATING IS FOR THE METRAGATOR ONLY. TEMPERATURE RATING AT THE GROOVED CONNECTIONS IS DETERMINED BY THE GASKET USED.

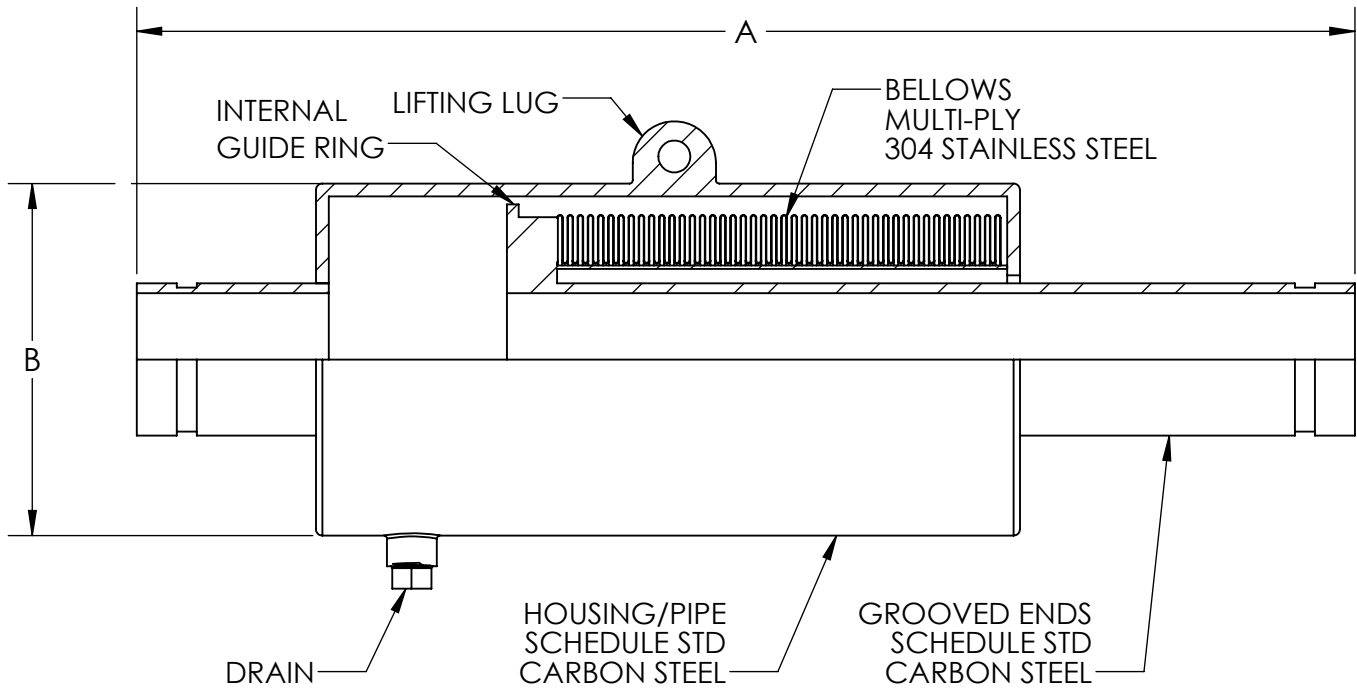
CUSTOMER: _____
 PROJECT: _____
 ENGINEER: _____

NOTE: ANCHOR LOAD =
 (MAX PSI X EFFECTIVE AREA) +
 (SPRING RATE X MOVEMENT)

MILITARY SPECS:
 CONFORMS TO MIL-E-17813H AND ASTM-F-2934

REV. 1	TEMPERATURE ADJUST	DATE 4/29/2021
		2323 W. HUBBARD ST. CHICAGO, IL 60612 TEL: 312-738-3800 FAX: 312-738-0415 WWW.METRAFLEX.COM
METRAFLEX METRAGATOR, 150 PSI, 4" AXIAL COMPRESSION, GROOVED ENDS		
DRAWN BY: DKISH		DATE: 6/1/2015
APPROVED: ZB		DATE: 6/2/2015
SCALE: N/A	DRAWING NUMBER: GAT04SG-1	

METRAFLEX METRAGATOR
150 PSI, 6" AXIAL COMPRESSION, GROOVED ENDS
EXTERNALLY PRESSURIZED EXPANSION JOINT



THE EXPANSION JOINT IS DESIGNED FOR AXIAL MOVEMENT ONLY. PIPE MUST BE PROPERLY GUIDED AND ANCHORED PER THE RECOMMENDATIONS OF THE EXPANSION JOINT MANUFACTURERS ASSOCIATION.

QTY	PART NUMBER	PIPE SIZE		A (in)	B (in)	EFF. AREA (in ²)	SPRING RATE (lb/in)	NOTES
		NPS	MM					
	GAT06SG0200	2	50	31	5.5	13.2	115.0	
	GAT06SG0250	2.5	65	31.25	5.5	13.2	115.0	
	GAT06SG0300	3	80	29.5	6.5	20.8	235.0	
	GAT06SG0400	4	100	30.75	8.5	36.0	143.0	
	GAT06SG0500	5	130	30.75	10.75	46.4	166.0	
	GAT06SG0600	6	150	31.5	12.75	58.9	189.0	
	GAT06SG0800	8	200	33.75	14	88.8	235.0	
	GAT06SG1000	10	250	33	16	124.6	280.0	
	GAT06SG1200	12	300	32.25	18	166.6	326.0	

DESIGN DATA

MAXIMUM OPERATING TEMPERATURE: 500°F (260°C)*
 PRESSURE: 150 PSI (1034 KPa)
 TEST PRESSURE: 225 PSI (1551 KPa)
 AXIAL MOVEMENT: 6" COMPRESSION (150 mm)

*TEMPERATURE RATING IS FOR THE METRAGATOR ONLY. TEMPERATURE RATING AT THE GROOVED CONNECTIONS IS DETERMINED BY THE GASKET USED.

CUSTOMER: _____

PROJECT: _____

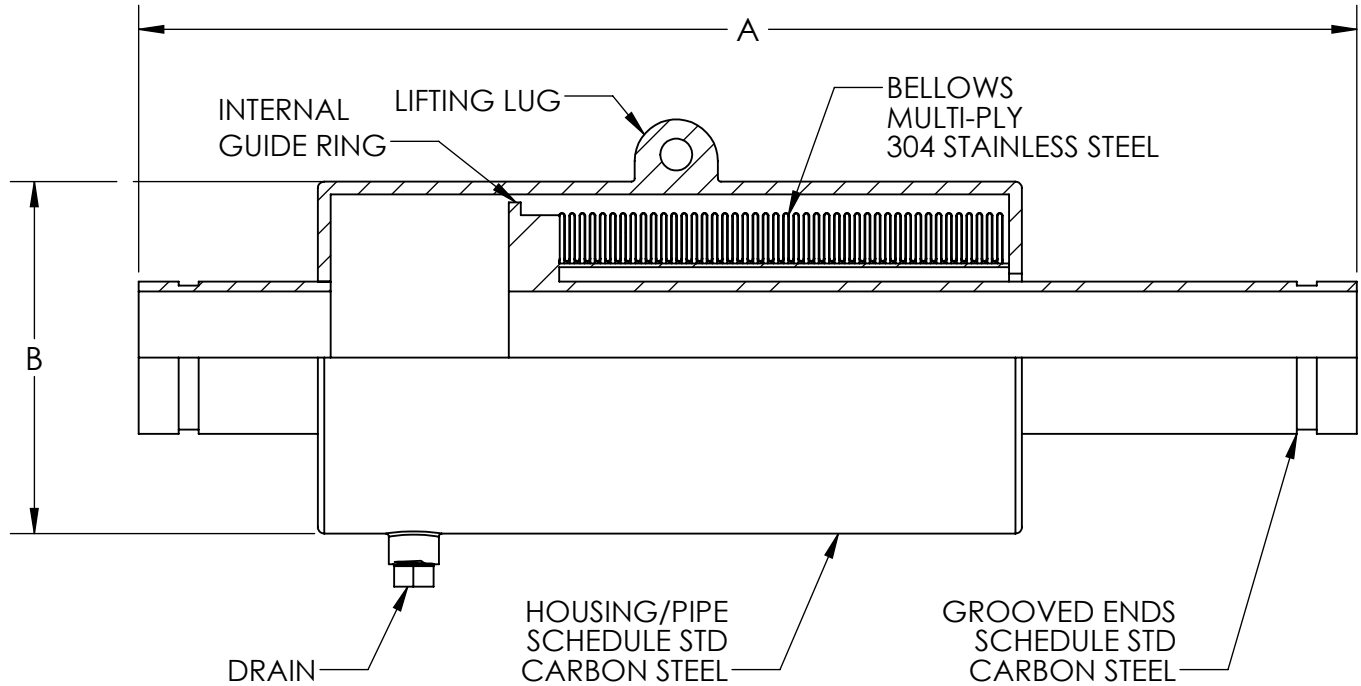
ENGINEER: _____

NOTE: ANCHOR LOAD =
 (MAX PSI X EFFECTIVE AREA) +
 (SPRING RATE X MOVEMENT)

MILITARY SPECS:
 CONFORMS TO MIL-E-17813H AND ASTM-F-2934

REV.	1	TEMPERATURE ADJUST	DATE 4/29/2021
		2323 W. HUBBARD ST. CHICAGO, IL 60612 TEL: 312-738-3800 FAX: 312-738-0415 WWW.METRAFLEX.COM	
		METRAFLEX METRAGATOR, 150 PSI, 6" AXIAL COMPRESSION, GROOVED ENDS	
DRAWN BY: DKISH		DATE: 6/1/2015	
APPROVED: ZB		DATE: 6/2/2015	
SCALE: N/A		DRAWING NUMBER: GAT06SG-1	

METRAFLEX METRAGATOR
150 PSI, 8" AXIAL COMPRESSION, GROOVED ENDS
EXTERNALLY PRESSURIZED EXPANSION JOINT



THE EXPANSION JOINT IS DESIGNED FOR AXIAL MOVEMENT ONLY. PIPE MUST BE PROPERLY GUIDED AND ANCHORED PER THE RECOMMENDATIONS OF THE EXPANSION JOINT MANUFACTURERS ASSOCIATION.

QTY	PART NUMBER	PIPE SIZE		A (in)	B (in)	EFF. AREA (in ²)	SPRING RATE (lb/in)	NOTES
		NPS	MM					
	GAT08SG0200	2	50	37.75	5.5	13.2	92.0	
	GAT08SG0250	2.5	65	38	5.5	13.2	92.0	
	GAT08SG0300	3	80	37.75	6.5	20.8	172.0	
	GAT08SG0400	4	100	37.25	8.5	36.0	103.0	
	GAT08SG0500	5	130	37.5	10.75	46.4	120.0	
	GAT08SG0600	6	150	37.75	12.75	58.9	138.0	
	GAT08SG0800	8	200	41	14	88.8	166.0	
	GAT08SG1000	10	250	39.25	16	124.6	200.0	
	GAT08SG1200	12	300	38.75	18	166.6	235.0	

DESIGN DATA

MAXIMUM OPERATING TEMPERATURE: 500°F (260°C)*
 PRESSURE: 150 PSI (1034 KPa)
 TEST PRESSURE: 225 PSI (1551 KPa)
 AXIAL MOVEMENT: 8" COMPRESSION (200 mm)

*TEMPERATURE RATING IS FOR THE METRAGATOR ONLY. TEMPERATURE RATING AT THE GROOVED CONNECTIONS IS DETERMINED BY THE GASKET USED.

CUSTOMER: _____
 PROJECT: _____
 ENGINEER: _____

NOTE: ANCHOR LOAD =
 (MAX PSI X EFFECTIVE AREA) +
 (SPRING RATE X MOVEMENT)

MILITARY SPECS:
 CONFORMS TO MIL-E-17813H AND ASTM-F-2934

REV. 1	TEMPERATURE ADJUST	DATE 4/29/2021
		2323 W. HUBBARD ST. CHICAGO, IL 60612 TEL: 312-738-3800 FAX: 312-738-0415 WWW.METRAFLEX.COM
METRAFLEX METRAGATOR, 150 PSI, 8" AXIAL COMPRESSION, GROOVED ENDS		
DRAWN BY: DKISH		DATE: 6/1/2015
APPROVED: ZB		DATE: 6/2/2015
SCALE: N/A	DRAWING NUMBER: GAT08SG-1	