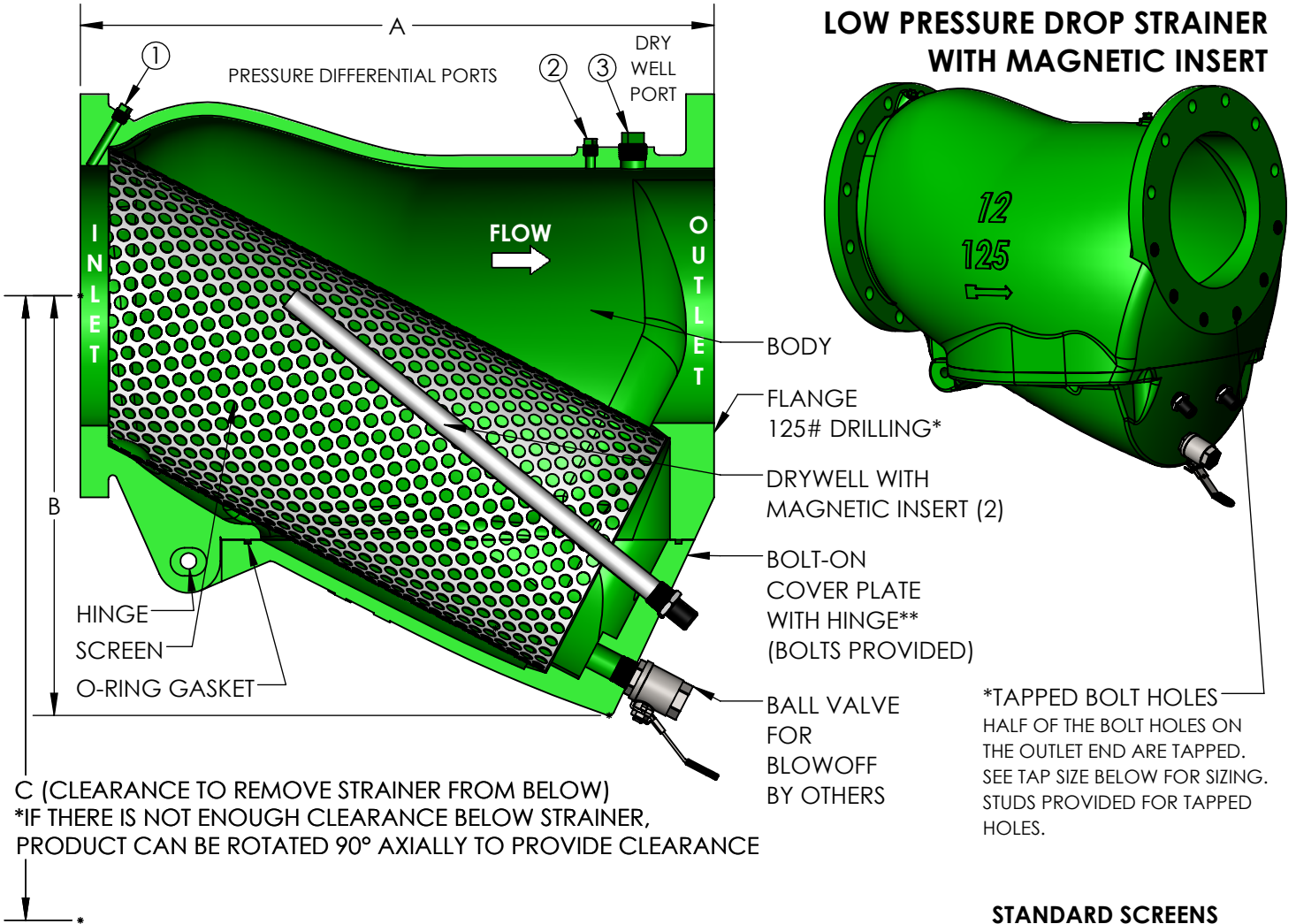


MODEL LPD-MAG 10" & 12" LOW PRESSURE DROP STRAINER WITH MAGNETIC INSERT



*TAPPED BOLT HOLES
HALF OF THE BOLT HOLES ON
THE OUTLET END ARE TAPPED.
SEE TAP SIZE BELOW FOR SIZING.
STUDS PROVIDED FOR TAPPED
HOLES.

STANDARD SCREENS

SERVICE	SIZE	PERF
LIQUID	10" - 12"	.125"

MATERIALS OF CONSTRUCTION

BODY, FLANGES, COVER - CAST IRON
SCREEN - 304 STAINLESS STEEL
O-RING GASKET - VITON
DRYWELL - 304 STAINLESS STEEL
MAGNETS - NEODYMIUM

OPERATING TEMPERATURE/PRESSURE

WATER, OIL, GAS.....175 PSI @ 150°F
MAXIMUM OPERATING TEMPERATURE: 212°F

QTY	PART NUMBER	PIPE SIZE		A	B	C	#Cv (GPM)	SCREEN AREA (in ²)	PORT SIZE (NPT)		BLOWOFF SIZE (NPT)	TAP SIZE (UNC)	TAP DEPTH	WEIGHT (LBS)
		INCH	MM						1 & 2	3				
	LPDMAG1000	10"	250	27"	16-5/8"	37-7/8"	2424	745.2	3/8"	1"	2"	7/8"-9	1-1/8"	464
	LPDMAG1200	12"	300	29-7/8"	19-3/4"	43-5/8"	3200	1035.1	3/8"	1"	2"	7/8"-9	1-1/8"	565

#Cv IS THE FLOW RATE IN GALLONS OF 60°F WATER THAT WILL PASS THROUGH THE STRAINER IN 1 MINUTE AT A 1 PSI PRESSURE DROP.

NSF 372 - LEAD FREE

The wetted surface of this product contacted by consumable water contains less than one quarter of one percent (0.25%) of lead by weight. Material complies with state codes and standards, where applicable, requiring reduced lead content. Not suitable for potable water systems due to materials of construction.

**MAGNETS AND DRYWELLS MUST BE REMOVED BEFORE THE COVER CAN BE OPENED.

CUSTOMER: _____

PROJECT: _____

ENGINEER: _____

REV.	1	C DIM, AND HINGE AND STUD CALLOUTS ADDED	DATE 7/7/2022
		2323 W. HUBBARD ST. CHICAGO, IL 60612 TEL: 312-738-3800 FAX: 312-738-0415 WWW.METRAFLEX.COM	
MODEL LPD-MAG 10" & 12" LPD STRAINER WITH MAGNETIC INSERT			
DRAWN BY: DKISH		DATE: 10/1/2021	
APPROVED: JC		DATE: 10/1/2021	
SCALE: NTS	DRAWING NUMBER: LPDMAG-10AND12		