

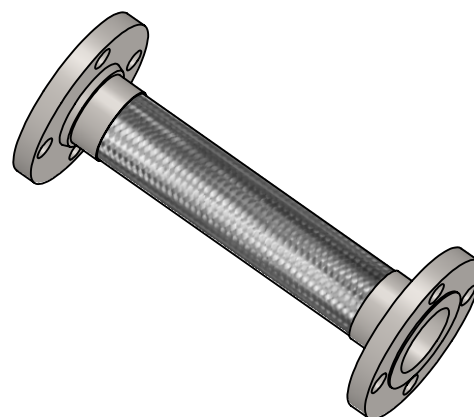
Note: Do not use wrenches on hose or braid collar.

Qty	Model	Size I.D. (in)	A (in)	Pressure @ 70°F (PSI)	Weight (Lbs)	Project Info
	GASSF0050	1/2	12-1/8"	150	4.3	
	GASSF0075	3/4	13-5/8"	150	4.6	
	GASSF0100	1	14-3/4"	150	4.8	
	GASSF0125	1-1/4	15"	150	7.2	
	GASSF0150	1-1/2	15-7/8"	150	7.4	
	GASSF0200	2	16-7/8"	150	11.9	
	GASSF0250	2-1/2	18-3/4"	150	18.6	
	GASSF0300	3	20"	150	19.5	
	GASSF0400	4	24-7/8"	150	31	

MAX INTERMITTENT OFFSET FROM CENTERLINE: 2"  
CONTACT METRAFLEX FOR CUSTOM LENGTHS.

### NSF 372 - LEAD FREE


The wetted surface of this product contacted by consumable water contains less than one quarter of one percent (0.25%) of lead by weight. Material complies with state codes and standards, where applicable, requiring reduced lead content.



CUSTOMER: \_\_\_\_\_

PROJECT: \_\_\_\_\_

ENGINEER: \_\_\_\_\_

REV.	DATE
	
2323 W. HUBBARD ST. CHICAGO, IL 60612 TEL: 312-738-3800 FAX: 312-738-0415 WWW.METRAFLEX.COM	
<b>MODEL GASSF</b>	
FLEXIBLE CONNECTOR FOR GAS SERVICE	
DRAWN BY: <b>JULIANH</b>	DATE: <b>06/03/2025</b>
APPROVED:	DATE:
SCALE: <b>N/A</b>	DRAWING NUMBER: <b>GASSF</b>