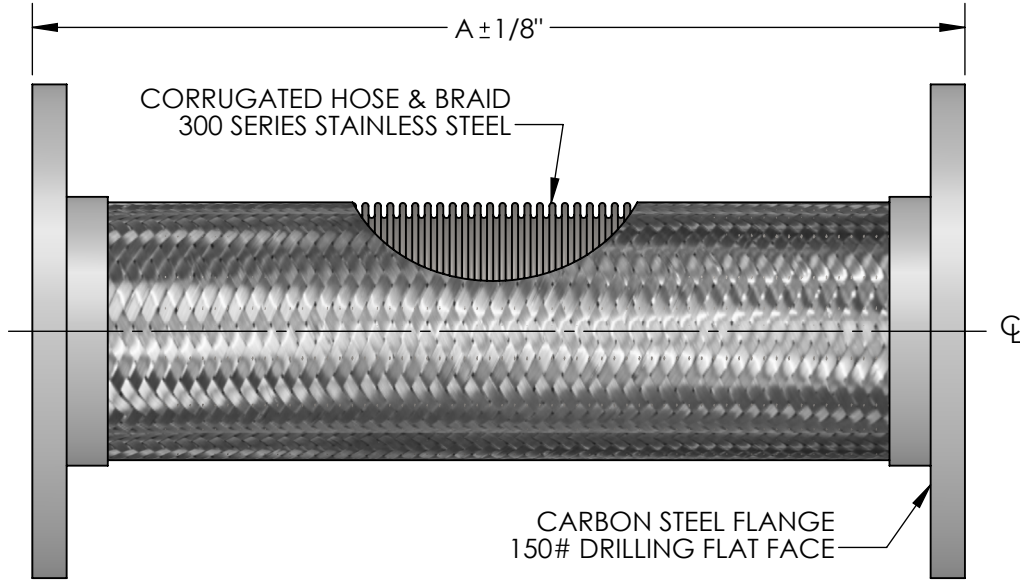


**MODEL SLPC
FLANGED FLEXIBLE PUMP CONNECTOR**

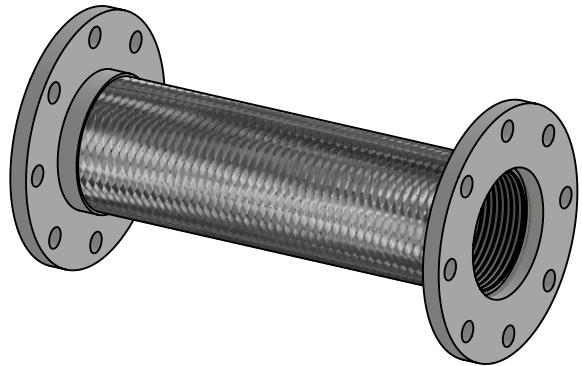


| QTY | PART NUMBER | PIPE SIZE | | A | PRESSURE RATING (PSI)* | WEIGHT (LBS) | PROJECT INFORMATION |
|-----|-------------|-----------|-----|---------|------------------------|--------------|---------------------|
| | | INCH | MM | | | | |
| | SLPC0250 | 2-1/2" | 65 | 10-1/4" | 387 | 13 | |
| | SLPC0300 | 3" | 80 | 10-5/8" | 316 | 14 | |
| | SLPC0400 | 4" | 100 | 11-3/4" | 232 | 19 | |
| | SLPC0500 | 5" | 125 | 13-5/8" | 191 | 27 | |
| | SLPC0600 | 6" | 150 | 14-1/8" | 165 | 30 | |
| | SLPC0800 | 8" | 200 | 15-3/8" | 234 | 62 | |
| | SLPC1000 | 10" | 250 | 17-3/4" | 230 | 68 | |
| | SLPC1200 | 12" | 300 | 18-3/8" | 161 | 106 | |
| | SLPC1400 | 14" | 350 | 20" | 150 | 118 | |

*FOR SAFE WORKING PRESSURE ABOVE 70°F, MULTIPLY THE PRESSURE SHOWN AT 70°F TIMES THE CORRECTION FACTOR OF THE REQUIRED TEMPERATURE.

MAX INTERMITTENT OFFSET FROM CENTERLINE 3/8"
MAX PERMANENT OFFSET FROM CENTERLINE 3/4"

| TEMPERATURE (°F) | FACTOR |
|------------------|--------|
| 70 | 1.0 |
| 200 | .91 |
| 300 | .85 |
| 400 | .78 |
| 500 | .77 |
| 600 | .76 |



NSF 372 - LEAD FREE

The wetted surface of this product contacted by consumable water contains less than one quarter of one percent (0.25%) of lead by weight. Material complies with state codes and standards, where applicable, requiring reduced lead content. Not suitable for potable water systems due to materials of construction.

CUSTOMER: _____

PROJECT: _____

ENGINEER: _____

| | | | |
|------------------------|-----------------|---|-----------------|
| REV. | 1 | TEMP FACTOR UPDATED | DATE 12/28/2016 |
| | | 2323 W. HUBBARD ST. CHICAGO, IL 60612 TEL: 312-738-3800 FAX: 312-738-0415 WWW.METRAFLEX.COM | |
| | | MODEL SLPC FLANGED FLEXIBLE PUMP CONNECTOR | |
| DRAWN BY: DKISH | | DATE: 1/10/2014 | |
| APPROVED: JC | | DATE: 1/10/2014 | |
| SCALE: | DRAWING NUMBER: | | |
| N/A | SLPC-1 | | |