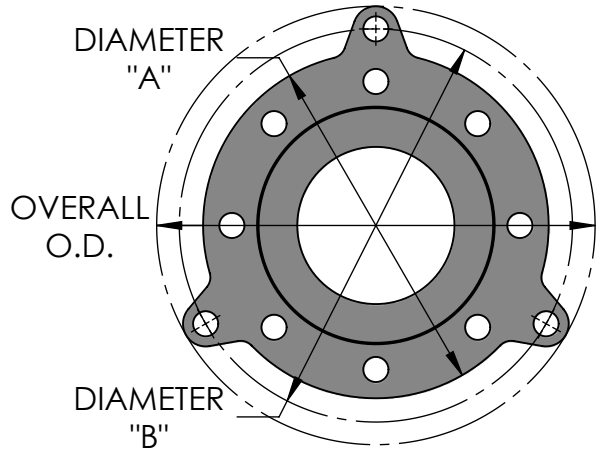


Size I.D. (in)	Flange Thickness (in)	Diameter "A" (in)	Diameter "B" (in)	Overall O.D. (in)	# Of Holes	Thread Size
1	5/16	4-1/4	5-1/8	6	4	1/2-12UNC
1-1/2	11/32	5	5-7/8	6-3/4	4	1/2-12UNC
2	7/16	6	6-7/8	8-1/8	4	5/8-11UNC
2-1/2	1/2	7	8-1/8	9-3/8	4	5/8-11UNC
3	1/2	7-1/2	8-3/4	10	4	5/8-11UNC
4	5/8	9	9-7/8	11-1/8	8	5/8-11UNC
5	3/4	10	11-1/2	13	8	3/4-10UNC
6	3/4	11	12-1/2	14	8	3/4-10UNC
8	15/16	13-1/2	14-3/4	16-1/4	8	3/4-10UNC
10	1	16	17-1/2	19	12	7/8-9UNC
12	1	19	20-1/2	22	12	7/8-9UNC



\*Limit bolts are factory set to prevent extension. If extension is required, the stop nut must be adjusted.

Qty	Size I.D. (in)	F/F (in)	Maximum Axial Travel (in)	Maximum Offset (in)	MAXIMUM PRESSURE (PSI) VS TEMPERATURE				Weight (Lbs)	Vacuum Rating (in. Hg/°F)
					70°F	200°F	300°F	400°F		
	1	1-3/4	1/2	1/4	140	90	64	42	2	29.9/400
	1-1/2	2	1/2	1/4	140	90	64	42	4	29.9/400
	2	2-3/4	3/4	3/8	140	90	64	42	8	29.9/400
	2-1/2	3-3/16	3/4	3/8	140	90	64	42	11	29.9/400
	3	3-5/8	1	1/2	140	90	64	42	13	29.9/400
	4	3-5/8	1	1/2	140	90	64	42	19	29.9/400
	5	4	1	1/2	140	90	64	42	25	29.9/300
	6	4	1-1/8	9/16	140	90	64	42	30	29.9/300
	8	6	1-1/8	9/16	120	80	54	37	48	29.9/125
	10	7	1-1/8	3/8	70	48	30	17	80	19.0/212
	12	7-7/8	1-3/16	5/16	70	48	30	17	105	10.0/212

Note: Angular Deflection approx. 14 degrees. Maximum Axial Travel is based on installation with no misalignment or angular deflection. Maximum Offset is based on installation at neutral length with limit bolts in place.

Project Info	

CUSTOMER: \_\_\_\_\_

PROJECT: \_\_\_\_\_

ENGINEER: \_\_\_\_\_

REV.	DATE
2323 W. HUBBARD ST. CHICAGO, IL 60612 TEL: 312-738-3800 FAX: 312-738-0415 WWW.METRAFLEX.COM	
<b>MODEL T2C</b> <b>PTFE MOLDED FLEXIBLE COUPLING</b>	
DRAWN BY: DKISH	DATE: 8/11/2014
APPROVED: DANH	DATE: 8/11/2014
SCALE: NONE	DRAWING NUMBER: T2C-1