

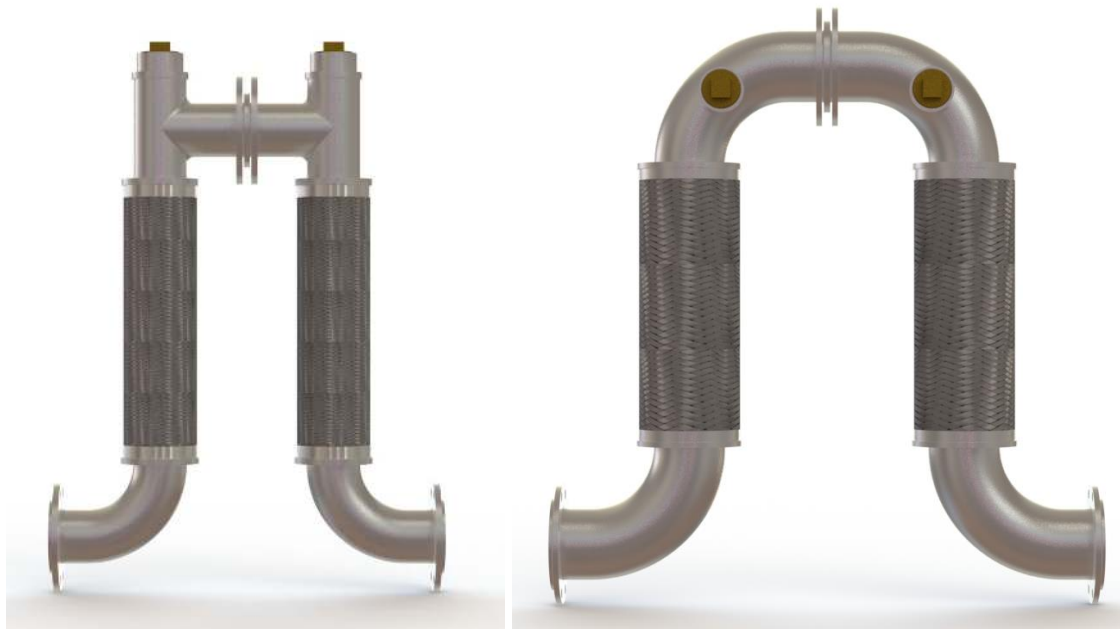


PoopLoop-L[®] Expansion Joint Installation Instructions

General

The PoopLoop-L product consists two parallel sections of lined flexible corrugated hose and braid with connecting fittings as specified for project requirements. The PoopLoop-L is supplied with clean out fittings and means to maintain pipe main pitch.

The PoopLoop-L was developed for whenever drain, waste and vent lines cross building joints or are expected to see thermal or other movements. PoopLoop- is available with flange ends or no hub ends, flanged ends shown below.



Small Dia. Configuration
4" and 5"

Large Dia. Configuration.
6" and larger

Receiving

Each PoopLoop-L is shipped with a tag that indicates the part number and axial movement. Check the bill of lading for any shortages. Check the sections of flexible hose and braid for any damage. Note any shortages or damage on the shipping papers.

Handling

PoopLoop-L's are fabricated with standard pipe fittings that are not generally prone to damage. The outer braid should be evenly distributed around the hose and the installer should avoid snagging. The sections of corrugated flexible metal hose located under the braid must be handled with care. The flexible metal hose is susceptible to point load punctures and crushing damage.

Do not twist, over bend or flex the hose past its designed movement. When installing the PoopLoop-L, do not wrench the hose or the weld collars located at each end of the hose.

When welding in close proximity of the sections of flexible metal hose, weld splatter must not come in contact with the hose. When unloading, lift the PoopLoop-L use nylon slings; do not allow sections of flexible hose to be over extended.

Storage

Metraloops ideally should be stored inside prior to installation. They can be stored outdoors under a weather proof tarp.

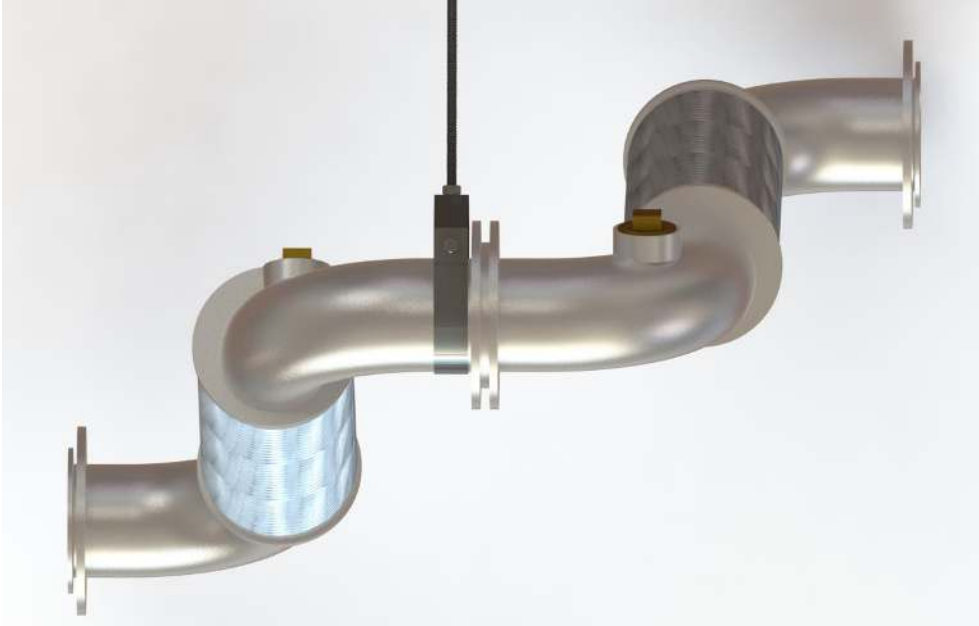
When stacking, the weight of the Metraloops must not be supported by the flexible hose. Reuse the shipping blocks so that the weight of the loops is supported from fitting to fitting.

Insulation

When required, Metraloops should be insulated with flexible unicellular foam, mineral wool or fiberglass insulation. Ridged insulations should be avoided on the hose element.

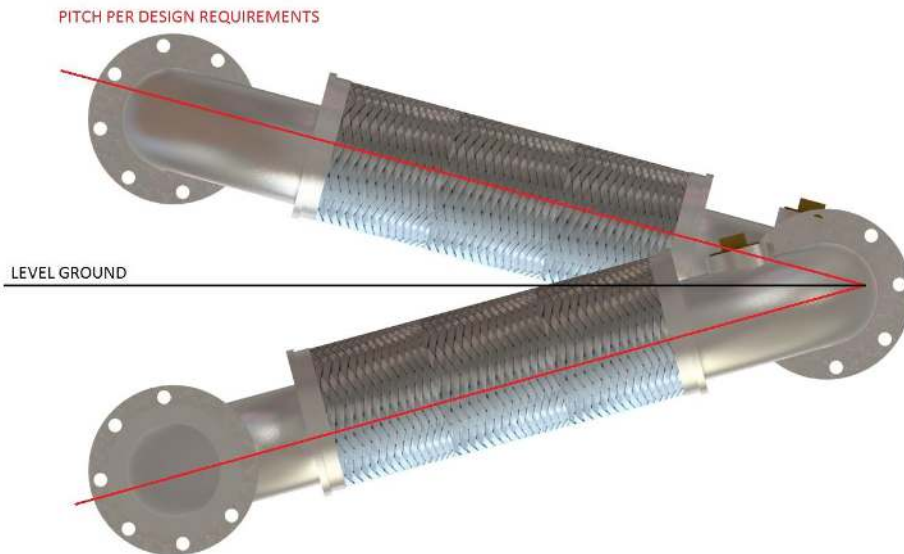
Support

The PoopLoop-L's 180° return fitting needs to be supported or hung in such a way that it is allowed to flex to allow the required range of motion, this is typically achieved with the use of a clevis hanger. The sections of flexible metal hose do not need to be supported. Do not support adjacent piping or equipment with a PoopLoop-L.



Pitch

PoopLoop-L is supplied with floating flanges to allow installer to maintain system pitch as shown below.



Maintenance

The Metraloop-L is maintenance free and has no serviceable parts. Periodic visual inspections should be done. Inspections should be made after any seismic event.

The Metraflex Co.
2323 West Hubbard St.
Chicago, IL 60612
Phone 312-738-3800
Fax 312-738-0415
www.metraflex.com