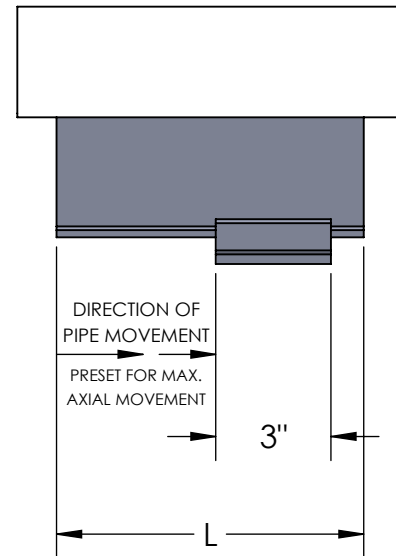
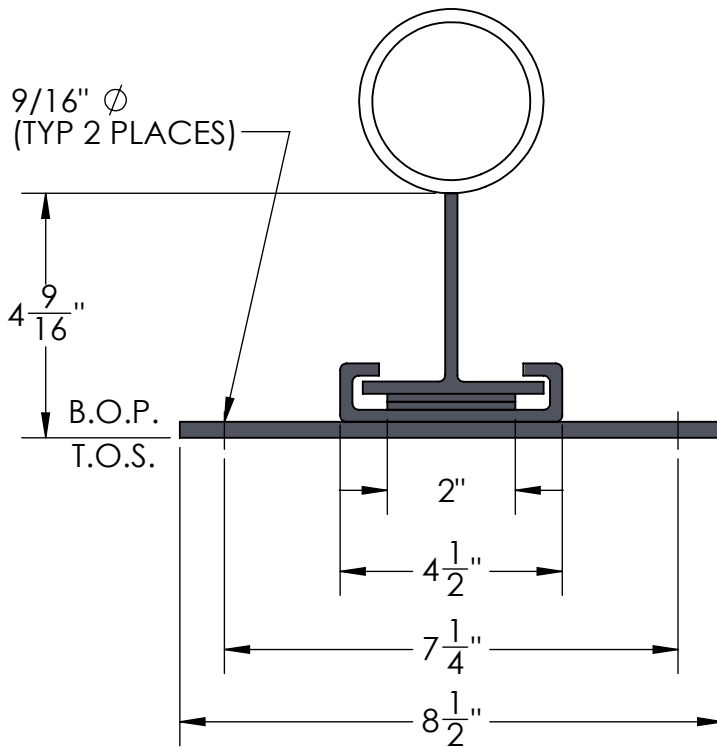
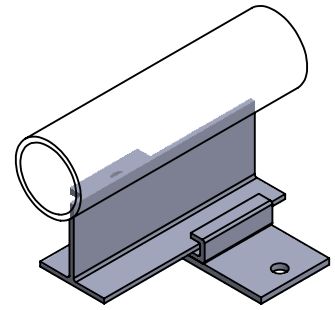


# SGB SLIDE GUIDE FOR SIZES 1/2" - 4"

**SPECIFICATIONS:**

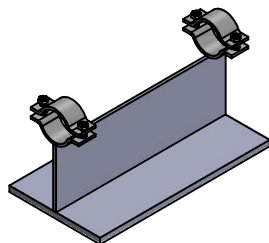
1. PRE-ENGINEERED TO SAVE CALCULATON AND INSTALLATION TIME.
2. BASES HAVE PTFE SLIDE BEARING PADS COMPOSED OF 100% VIRGIN TETRAFLUOUROETHLENE POLYMER.
3. SLIDES ARE FABRICATED CARBON STEEL SUPPORTS, BEARING SURFACES HAVE A POWDER COATED FINISH, PROVIDING A FLAT SMOOTH SURFACE.
4. CAPABLE OF SUPPORTING CONSTANT LOADS UP TO 2,000 PSI AT 70°F.
5. PTFE SLIDE ASSEMBLIES PERMIT SMOOTH, UNRESTRAINED MOVEMENT OF THE PIPE AND REDUCE OVERTURNING MOMENTS ON THE SUPPORT STRUCTURE.
6. PTFE IS CHEMICALLY INERT AND RESISTS ATTACK BY CHEMICALS, HUMIDITY AND OTHER ELEMENTS FOUND IN HARSH ENVIRONMENTS.
7. SELF-LUBRICATING, MAINTENANCE FREE.
8. MAXIMUM TEMPERATURE: 400°F.



MAX. INSULATION THICKNESS: 3-1/2"

AXIAL MOVEMENT	L	WEIGHT
4"	6"	4.9 LBS.
10"	12"	9.2 LBS.

MATERIAL: ASTM 1-36 CARBON STEEL  
FINISH: POWDER COATED FINISH



CLAMP OPTION AVAILABLE

REV.	DATE
2323 W. HUBBARD ST. CHICAGO, IL 60612 TEL: 312-738-3800 FAX: 312-738-0415 WWW.METRAFLEX.COM	
<b>SLIDE GUIDE ASSEMBLY</b> <b>MODEL SGB BOLT DOWN BASE, 1/2" - 4"</b>	
DRAWN BY: <b>RDAHYA</b>	DATE: <b>11/12/2020</b>
APPROVED:	DATE:
SCALE: NTS	DRAWING NUMBER: <b>SGB005-040</b>