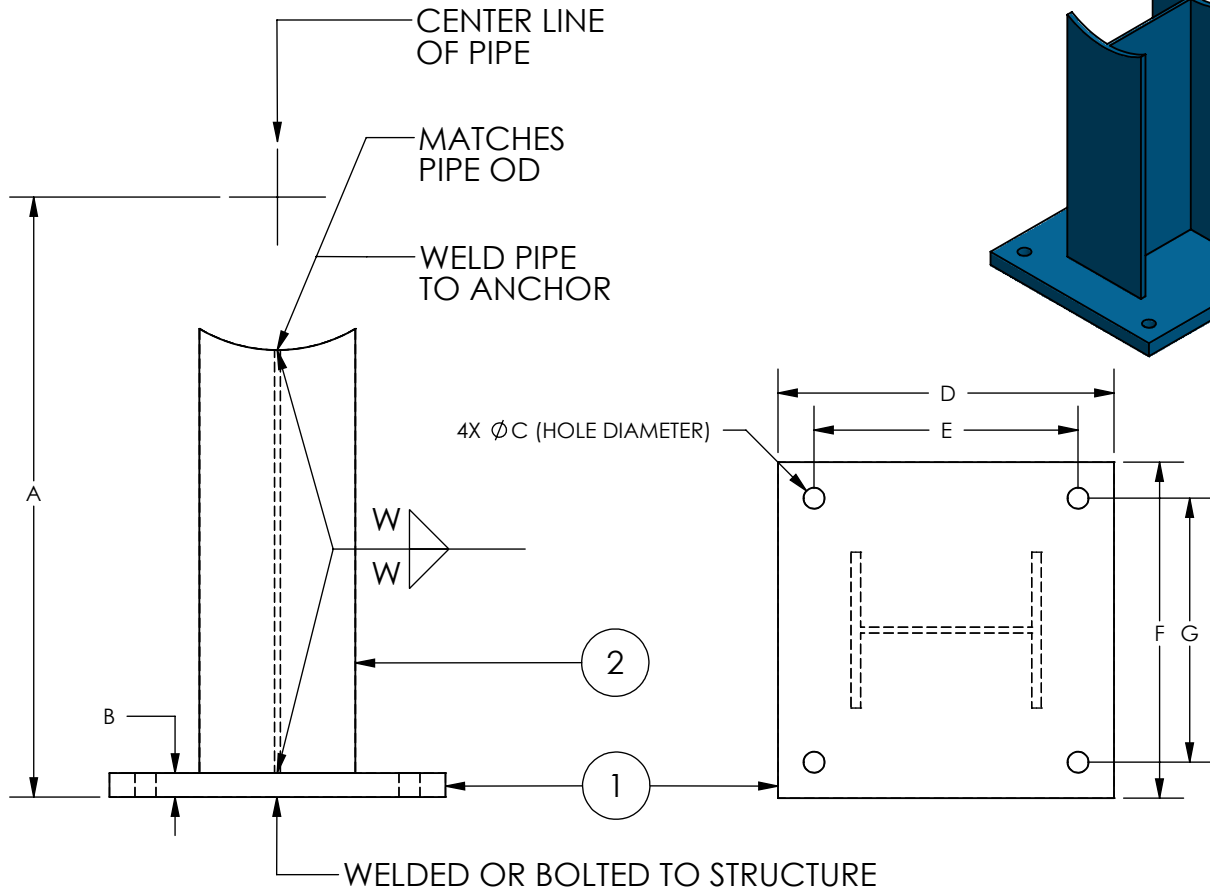


# MATERIALS OF CONSTRUCTION

- (1) BASE PLATE - ASTM A36
- (2) I-BEAM - ASTM A36

# MODEL PAI STRUCTURAL I-BEAM ANCHOR



QTY	MINIMUM PIPE DIAMETER	ANCHOR SIZE	DIM A & MAX ANCHOR FORCE (KIPS)					BASE PLATE DIMENSIONS						
			12" MAX	18" MAX	24" MAX	36" MAX	48" MAX	B (THICK)	C (HOLE DIAMETER)	D (LENGTH)	E	F (WIDTH)	G	W WELD SIZE
			2	PAI-1	1.397	0.951	0.732	0.497	0.371	3/4	3/4	9	6	9
2.5	PAI-2	2.338	1.545	1.149	0.76	0.565	3/4	3/4	1	7	9	6	1/4	
3	PAI-3	3.211	2.15	1.617	1.08	0.812	3/4	3/4	11	8	9	6	1/4	
3	PAI-4	4.256	2.945	2.293	1.586	1.229	3/4	3/4	12	9	10	7	3/8	
4	PAI-5	5.143	3.404	2.535	1.678	1.249	3/4	3/4	14	11	12	9	3/8	
4	PAI-6	10.183	7.089	5.596	3.919	3.072	3/4	3/4	18	15	10	7	1/2	
6	PAI-7	7.467	4.887	3.6	2.357	1.733	3/4	3/4	12	9	14	11	1/2	
6	PAI-8	13.388	9.371	7.366	5.137	4.015	1	7/8	14	11	14	11	1/2	
6	PAI-9	18.846	13.178	10.341	7.189	5.629	1	7/8	18	15	12	9	1/2	
8	PAI-10	24.545	16.444	12.393	8.388	6.385	1	7/8	20	17	13	10	1/2	
8	PAI-11	30.912	21.165	16.289	11.135	8.558	1	7/8	22	19	13	10	1/2	
10	PAI-12	31.101	22.319	17.928	12.745	10.153	1-1/4	1-1/4	16	13	16	13	3/4	
10	PAI-13	42.936	30.298	23.979	16.823	13.245	1-1/4	1-1/4	18	15	16	13	3/4	
10	PAI-14	52.225	36.957	29.319	20.595	16.236	1-1/4	1-1/4	20	17	16	13	3/4	
10	PAI-15	62.308	41.328	30.838	20.453	15.261	1-1/4	1-1/4	22	19	16	13	3/4	
16	PAI-16	63.399	53.456	37.304	23.703	16.802	1-1/4	1-1/4	20	17	20	17	3/4	

ALL DIMENSIONS IN INCHES

CUSTOMER: \_\_\_\_\_

PROJECT: \_\_\_\_\_

ENGINEER: \_\_\_\_\_

REV. 0 DATE 3/28/2022



## MODEL PAI STRUCTURAL I-BEAM ANCHOR

DRAWN BY: **BDIAZ** DATE: **3/28/2022**

APPROVED: \_\_\_\_\_ DATE: \_\_\_\_\_

SCALE: **NTS** DRAWING NUMBER: **PAI**