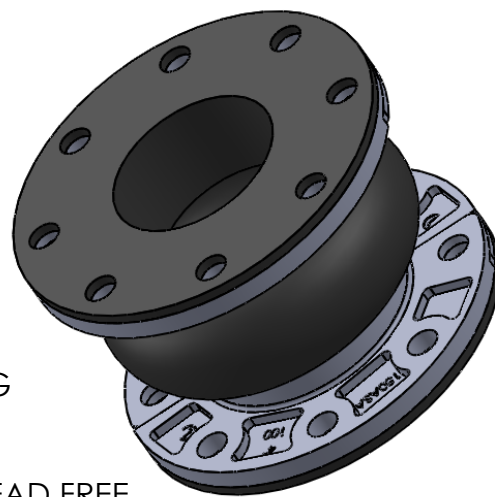


MAXIMUM WORKING
TEMPERATURE 230°F



LEAD FREE

The wetted surface of this product contacted by consumable water contains less than one quarter of one percent (0.25%) of lead by weight. Material complies with state codes and standards, where applicable, requiring reduced lead content.

Notes:

For installation instructions go to www.metralflex.com.
Joint must be installed at its neutral length,
and the bolts properly torqued.
Not suitable for steam or vacuum applications.
If connecting pipe is not anchored and guided,
control units must be used.

TO BE FURNISHED WITH CONTROL UNITS:

☐ YES

☐ NO

ITEM	PART NAME	MATERIAL
1	COVER	HYPALON
2	TUBE	NEOPRENE
3	RETAINING RING	DUCTILE IRON

					MOVEMENT CAPABILITY AND FORCES							Weight (lbs)
					AXIAL				DEFLECTION			
Qty	Part Number	Size I.D. (in)	F/F (in)	Pressure (PSI)	Comp. (in)	Approx Force (lbs)	Elong. (in)	Approx Force (lbs)	Lateral (in)	Approx Force (lbs)	Angular (Degrees)	
	711NH0200	2	6	150	1.75	220	0.75	120	0.75	160	35	5.5
	711NH0250	2.5	6	150	1.75	280	0.75	150	0.75	170	30	7.5
	711NH0300	3	6	150	1.75	330	0.75	180	0.75	190	30	8.5
	711NH0400	4	6	150	1.75	450	0.75	250	0.75	210	25	10
	711NH0500	5	6	150	1.75	550	0.75	310	0.75	250	25	12.5
	711NH0600	6	6	150	1.75	670	0.75	370	1	370	20	16.5
	711NH0800	8	6	150	1.75	740	0.75	410	1	450	20	22
	711NH1000	10	8	150	1.75	930	0.75	520	1	480	15	34
	711NH1200	12	8	150	1.75	970	0.75	550	1	570	15	45
	711NH1400	14	8	130	2	1190	0.875	670	1.125	750	12	55
	711NH1600	16	8	110	2	1270	0.875	720	1.125	870	12	64
	711NH1800	18	8	110	2	1430	0.875	810	1.125	960	9	71
	711NH2000	20	8	110	2	1590	0.875	900	1.125	1070	9	82
	711NH2400	24	10	100	2.25	2140	1	1240	1.125	1150	9	102
	711NH3000	30	10	100	2.25	2700	1	1565	1.125	1451	6	140
	711NH3600	36	10	90	2.25	3300	1	1912	1.125	1773	5	190

PROJECT INFO

CUSTOMER: _____

PROJECT: _____

ENGINEER: _____

REV.

DATE

Metraflex
for pipes in motion

2323 W. HUBBARD ST.
CHICAGO, IL 60612
TEL: 312-738-3800
FAX: 312-738-0415
WWW.METRAFLEX.COM

STYLE 711 WIDE ARCH HYPALON SPHERICAL CONNECTOR

DRAWN BY: DKISH

DATE: 1/20/2014

APPROVED: JC

DATE: 1/20/2014

SCALE:

NONE

DRAWING NUMBER:

711NH