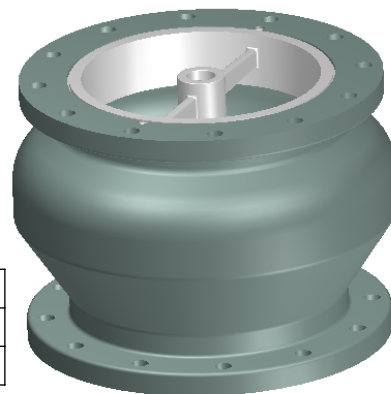


MAX NON-SHOCK
WORKING PSI

TEMPERATURE	PSI*
150 °F	300
200 °F	280

*Sizes 14" and Up
12" - 400/370PSI



LEAD FREE

The wetted surface of this product contacted by consumable water contains less than one quarter of one percent (0.25%) of lead by weight. Material complies with state codes and standards, where applicable, requiring reduced lead content.

Notes:

Valve is designed for liquid service only. Install 5 to 10 pipe diameters downstream from pump discharge or elbows to avoid flow turbulence. The intake and discharge sides of 12" through 42" CVO 900 series check valves must be mated to a ANSI B16.5 flat faced steel flange. The discharge side also must allow an interference clearance for the center shaft shown as dimension "F".

Valve complies with MSS-SP-125-2010.

ITEM	PART NAME	MATERIAL	ASTM NO.
1	BODY	CAST IRON	A126 CL. B
2	SEAT	STAINLESS	T304
3	PLUG	STAINLESS	T304
4	SPRING	STAINLESS	T304
5	BUSHING	STAINLESS	T304
6	SCREW	STAINLESS	T304



FOR ADDITIONAL FLOW STRAIGHTENING
SEE THE VANE FLEX AT
www.metroflex.com/vaneflex

Qty.	Part Number	Size I.D. (in)	A (in)	B (in)	C (in)	D (in)	E (in)	F (in)	Cv*	Weight (Lbs)	Bolt Size (in)	Number Of Bolts
	CVOSS962	12	20-1/2	14-1/4	17-3/4	2	20	3/4	2500	375	1-1/8	16
	CVOSS964	14	23	15-3/4	20-1/4	2-1/8	22	1-7/16	3400	455	1-1/8	20
	CVOSS966	16	25-1/2	17-5/8	22-1/2	2-1/4	25	2-1/4	4400	730	1-1/4	20
	CVOSS968	18	28	18-3/4	24-3/4	2-3/8	28	2-1/4	5600	930	1-1/4	24
	CVOSS970	20	30-1/2	20-5/8	27	2-1/2	31	2-15/16	6900	1180	1-1/4	24
	CVOSS974	24	36	24	32	2-3/4	37	3-5/8	10000	1680	1-1/2	24
	CVOSS980	30	43	29-1/4	39-1/4	3	45	5	15400	2375	1-3/4	28
	CVOSS986	36	50	45	46	3-3/8	54	8	22400	5511	2	32
	CVOSS992	42	57	50	52-3/4	3-11/16	64	9-1/4	30400	N/A	2	36

*Cv is the number of U.S. gallons/minute of 60°F water that will flow through a valve with 1 PSI of pressure drop across the valve.

PROJECT INFO

CUSTOMER: _____

PROJECT: _____

ENGINEER: _____

REV.	DATE
	
2323 W. HUBBARD ST. CHICAGO, IL 60612 TEL: 312-738-3800 FAX: 312-738-0415 WWW.METRAFLEX.COM	
MODEL CVO900-250-42-SS 12" - 42" 250# GLOBE STYLE SILENT CHECK VALVE W/ SS TRIM	
DRAWN BY: DKISH	DATE: 8/27/2013
APPROVED: JC	DATE: 8/27/2013
SCALE: NONE	DRAWING NUMBER: CVO900-250-42-SS