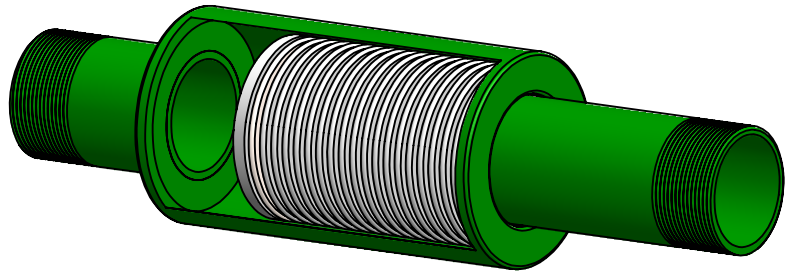


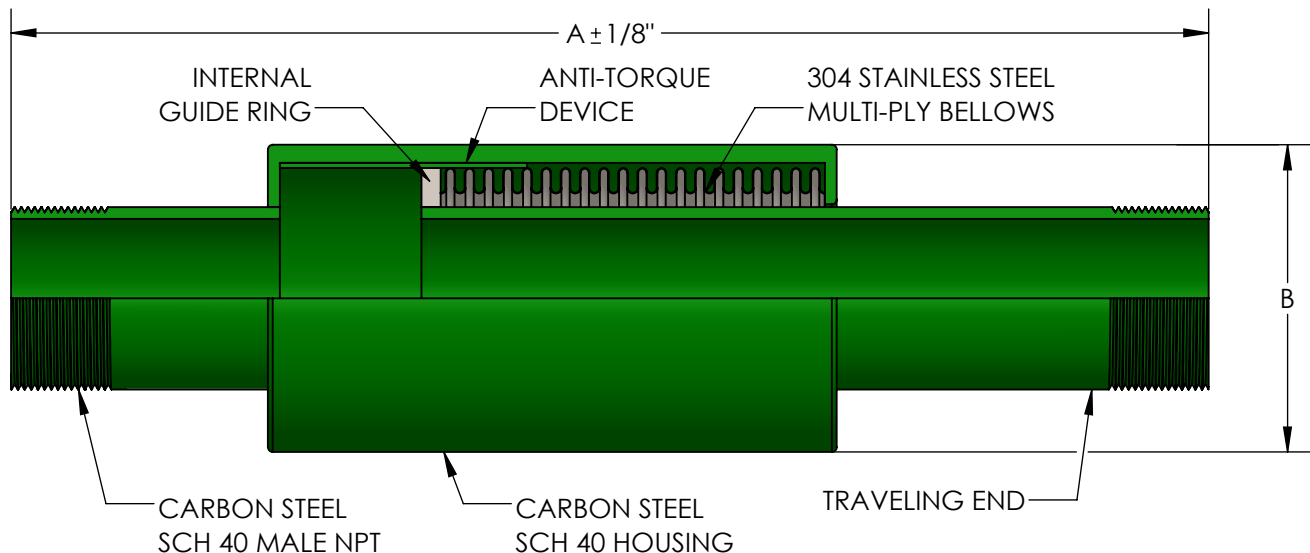
**MODEL HPT2
HIGH PRESSURE
EXTERNALLY PRESSURIZED
EXPANSION COMPENSATOR**

HOUSING CUT AWAY TO SHOW BELLOWS



DESIGN DATA

TEMPERATURE: 750° (399°C)
PRESSURE: 175 PSI (1206 kPa)
TEST PRESSURE: 250 PSI (1809 kPa)
AXIAL COMPRESSION: 2" (50mm)
AXIAL EXTENSION: 1/2" (13mm)



THIS EXPANSION JOINT IS DESIGNED FOR AXIAL MOVEMENT ONLY. PIPE MUST BE PROPERLY GUIDED AND ANCHORED PER THE RECOMMENDATIONS OF THE EXPANSION JOINT MANUFACTURERS ASSOCIATION.

QTY	PART NUMBER	PIPE SIZE		A	B	EFFECTIVE AREA (in ²)	SPRING RATE (lb/in)	WEIGHT	PROJECT INFORMATION
		INCH	MM						
	HPT20075	3/4"	20	12-3/4"	3"	1.5	81	3	
	HPT20100	1"	25	13-1/4"	3"	2.1	88	4	
	HPT20125	1-1/4"	32	13-1/4"	3"	3.3	75	5	
	HPT20150	1-1/2"	38	14-5/8"	3-1/2"	4.3	121	7	
	HPT20200	2"	50	14-5/8"	4"	6.3	143	10	
	HPT20250	2-1/2"	65	16"	5"	8.8	187	14	
	HPT20300	3"	80	16"	5-1/2"	13.1	230	18	
	HPT20400	4"	100	16-3/8"	6-5/8"	20.8	484	25	


NSF 372 - LEAD FREE

The wetted surface of this product contacted by consumable water contains less than one quarter of one percent (0.25%) of lead by weight. Material complies with state codes and standards, where applicable, requiring reduced lead content.

CUSTOMER: _____

PROJECT: _____

ENGINEER: _____

REV. 1	Edit B dimension to 3" on lines 1 and 2. DATE:08/28/2019
 <div> 2323 W. HUBBARD ST. CHICAGO, IL 60612 TEL: 312-738-3800 FAX: 312-738-0415 WWW.METRAFLEX.COM </div>	
MODEL HPT2 HIGH PRESSURE EXPANSION COMPENSATOR	
DRAWN BY: DKISH	DATE: 9/3/2015
APPROVED: JC	DATE: 9/3/2015
SCALE: N/A	DRAWING NUMBER: HPT2