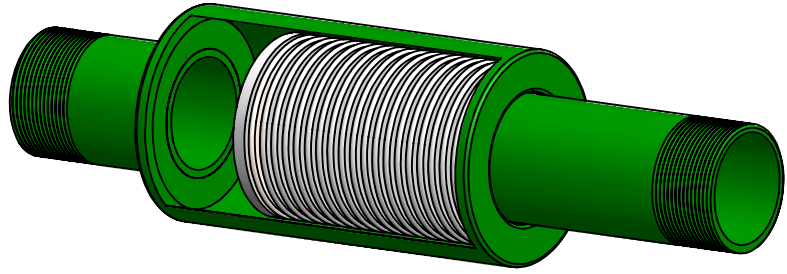


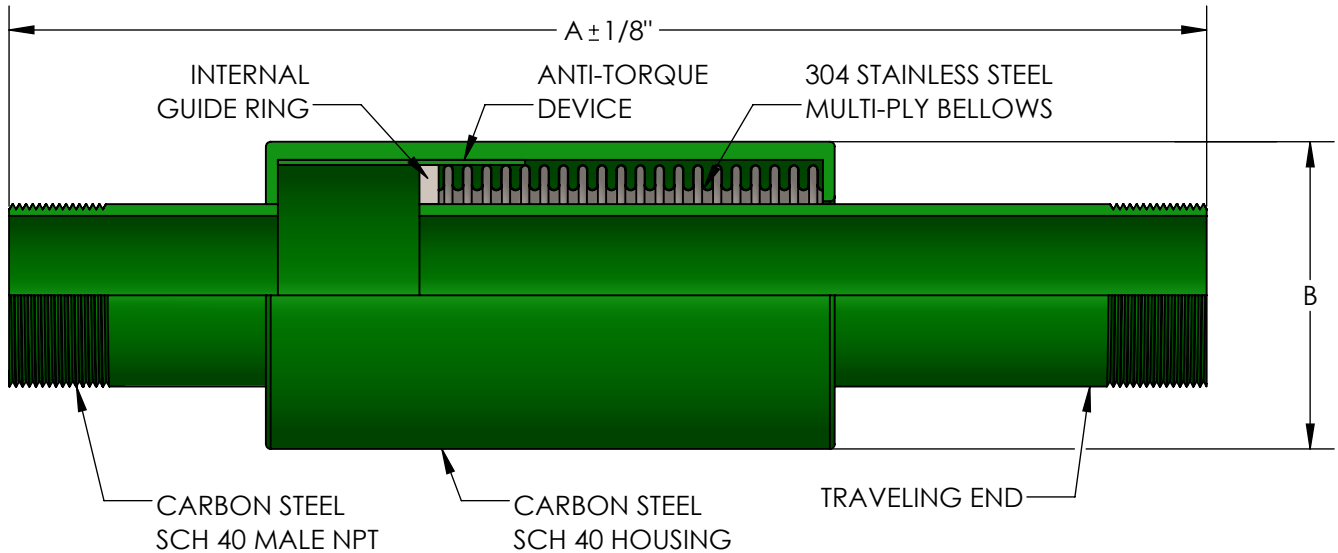
**MODEL HPT3  
HIGH PRESSURE  
EXTERNALLY PRESSURIZED  
EXPANSION COMPENSATOR**

HOUSING CUT AWAY TO SHOW BELLOWS



**DESIGN DATA**

TEMPERATURE: 750° (399°C)  
PRESSURE: 175 PSI (1206 kPa)  
TEST PRESSURE: 250 PSI (1809 kPa)  
AXIAL COMPRESSION: 3" (80mm)  
AXIAL EXTENSION: 1/2" (13mm)



THIS EXPANSION JOINT IS DESIGNED FOR AXIAL MOVEMENT ONLY. PIPE MUST BE PROPERLY GUIDED AND ANCHORED PER THE RECOMMENDATIONS OF THE EXPANSION JOINT MANUFACTURERS ASSOCIATION.

QTY	PART NUMBER	PIPE SIZE		A	B	EFFECTIVE AREA (in <sup>2</sup> )	SPRING RATE (lb/in)	WEIGHT	PROJECT INFORMATION
		INCH	MM						
	HPT30075	3/4"	20	16-1/2"	3"	1.5	58	4	
	HPT30100	1"	25	16-1/2"	3"	2.1	63	6	
	HPT30125	1-1/4"	32	16-1/2"	3"	3.3	52	6	
	HPT30150	1-1/2"	38	17-1/2"	3-1/2"	4.3	82	8	
	HPT30200	2"	50	17-1/2"	4"	6.3	117	12	
	HPT30250	2-1/2"	65	18-3/4"	5"	8.8	132	16	
	HPT30300	3"	80	19-1/4"	5-1/2"	13.1	161	21	
	HPT30400	4"	100	19-1/4"	6-5/8"	20.8	341	28	


**NSF 372 - LEAD FREE**

The wetted surface of this product contacted by consumable water contains less than one quarter of one percent (0.25%) of lead by weight. Material complies with state codes and standards, where applicable, requiring reduced lead content.

CUSTOMER: \_\_\_\_\_

PROJECT: \_\_\_\_\_

ENGINEER: \_\_\_\_\_

REV. 1	Edit B dimension to 3" on lines 1 and 2. DATE: 08/28/2019
 <div style="float: right; text-align: right;">                 2323 W. HUBBARD ST. CHICAGO, IL 60612 TEL: 312-738-3800 FAX: 312-738-0415 WWW.METRAFLEX.COM             </div>	
<b>MODEL HPT3</b> HIGH PRESSURE EXPANSION COMPENSATOR	
DRAWN BY: <b>DKISH</b>	DATE: <b>9/3/2015</b>
APPROVED: <b>JC</b>	DATE: <b>9/3/2015</b>
SCALE: <b>N/A</b>	DRAWING NUMBER: <b>HPT3</b>