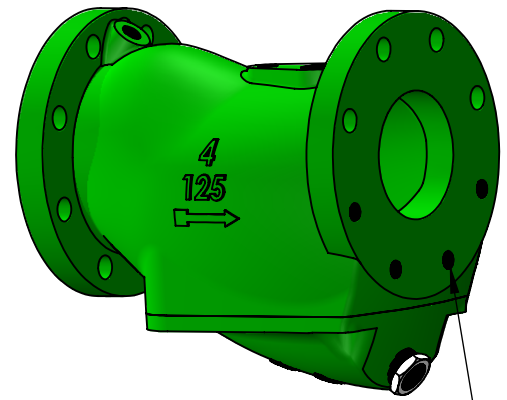
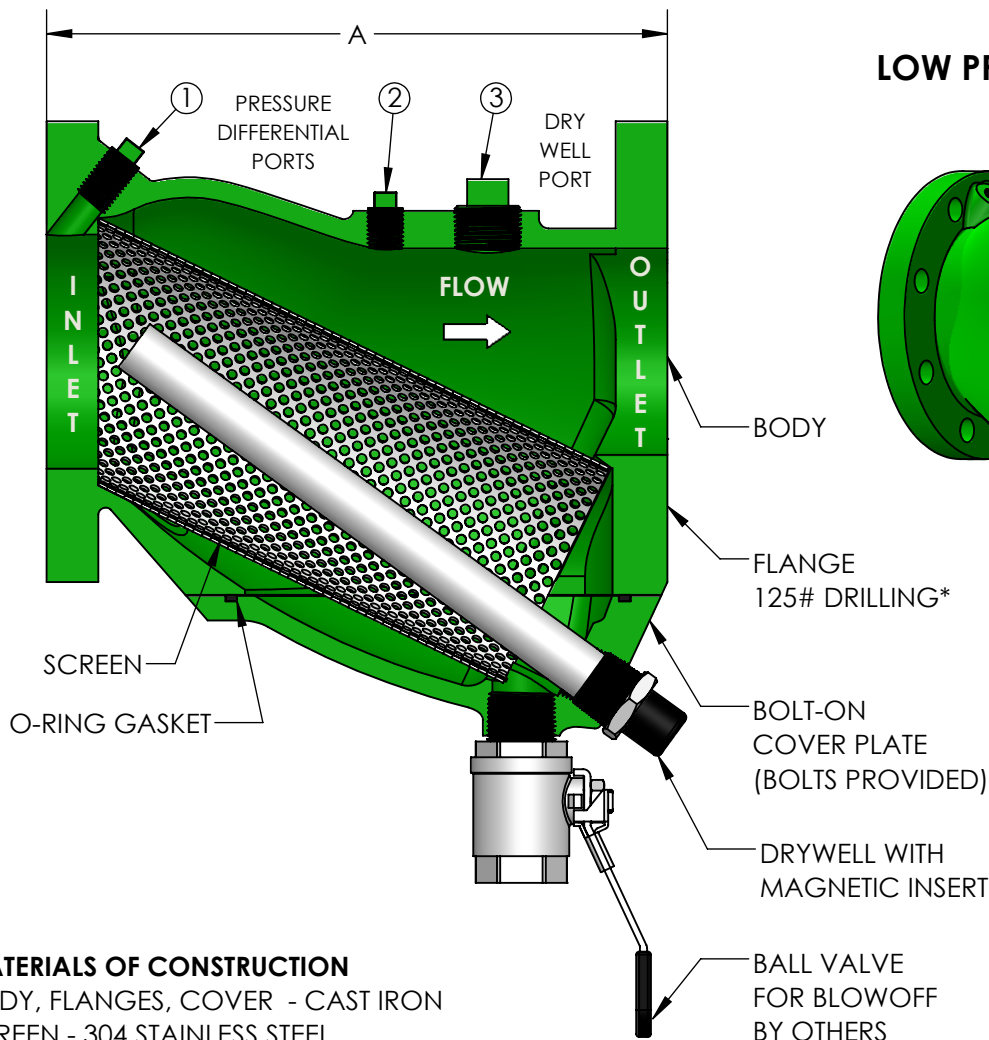


MODEL LPD-MAG **LOW PRESSURE DROP STRAINER** **WITH MAGNETIC INSERT**



*TAPPED BOLT HOLES
HALF OF THE BOLT HOLES ON
THE OUTLET END ARE TAPPED.
SEE TAP SIZE BELOW FOR SIZING.

STANDARD SCREENS

| SERVICE | SIZE | PERF |
|---------|---------|-------|
| LIQUID | 2" - 3" | .045" |
| | 4" - 8" | .125" |

MATERIALS OF CONSTRUCTION

BODY, FLANGES, COVER - CAST IRON
SCREEN - 304 STAINLESS STEEL
O-RING GASKET - VITON
DRYWELL - 304 STAINLESS STEEL
MAGNETS - NEODYMIUM

OPERATING TEMPERATURE/PRESSURE

WATER, OIL, GAS.....175 PSI @ 150°F
MAXIMUM OPERATING TEMPERATURE: 212°F

| QTY | PART NUMBER | PIPE SIZE | | A | B | Cv [#] (GPM) | SCREEN AREA (in ²) | PORT SIZE (NPT) | | BLOWOFF SIZE (NPT) | TAP SIZE (UNC) | TAP DEPTH | WEIGHT (LBS) |
|-----|-------------|-----------|-----|---------|---------|--------------------------|--------------------------------------|-----------------|------|-----------------------|-------------------|--------------|-----------------|
| | | INCH | MM | | | | | 1 & 2 | 3 | | | | |
| | LPDMAG0200 | 2" | 50 | 7-7/8" | 4-5/8" | 120 | 52.0 | 1/4" | 1/2" | 3/4" | 5/8"-11 | 1/2" | 20 |
| | LPDMAG0250 | 2-1/2" | 65 | 10" | 5-1/4" | 160 | 84.6 | 1/4" | 1/2" | 3/4" | 5/8"-11 | 1/2" | 30 |
| | LPDMAG0300 | 3" | 80 | 10-1/8" | 6-1/4" | 236 | 99.0 | 1/4" | 1/2" | 1" | 5/8"-11 | 7/8" | 50 |
| | LPDMAG0400 | 4" | 100 | 12-1/8" | 7-3/8" | 460 | 147.3 | 3/8" | 1" | 1" | 5/8"-11 | 7/8" | 75 |
| | LPDMAG0500 | 5" | 125 | 15-5/8" | 8-3/8" | 600 | 226.5 | 3/8" | 1" | 1-1/2" | 3/4"-10 | 7/8" | 115 |
| | LPDMAG0600 | 6" | 150 | 18-1/2" | 10-5/8" | 952 | 317.6 | 3/8" | 1" | 1-1/2" | 3/4"-10 | 7/8" | 154 |
| | LPDMAG0800 | 8" | 200 | 22-1/2" | 13" | 1580 | 515.0 | 3/8" | 1" | 1-1/2" | 3/4"-10 | 1" | 273 |

[#] Cv IS THE FLOW RATE IN GALLONS OF 60°F WATER THAT WILL PASS THROUGH THE STRAINER IN 1 MINUTE AT A 1 PSI PRESSURE DROP.


NSF 372 - LEAD FREE

The wetted surface of this product contacted by consumable water contains less than one quarter of one percent (0.25%) of lead by weight. Material complies with state codes and standards, where applicable, requiring reduced lead content.

CUSTOMER: _____

PROJECT: _____

ENGINEER: _____

| | |
|---|--------------------------|
| REV. | DATE |
|  | |
| 2323 W. HUBBARD ST. CHICAGO, IL 60612 TEL: 312-738-3800 FAX: 312-738-0415 WWW.METRAFLEX.COM | |
| MODEL LPD-MAG LPD STRAINER WITH MAGNETIC INSERT | |
| DRAWN BY: RDAHYA | DATE: 09/30/2020 |
| APPROVED: | DATE: |
| SCALE: NTS | DRAWING NUMBER: LPDMAG-3 |